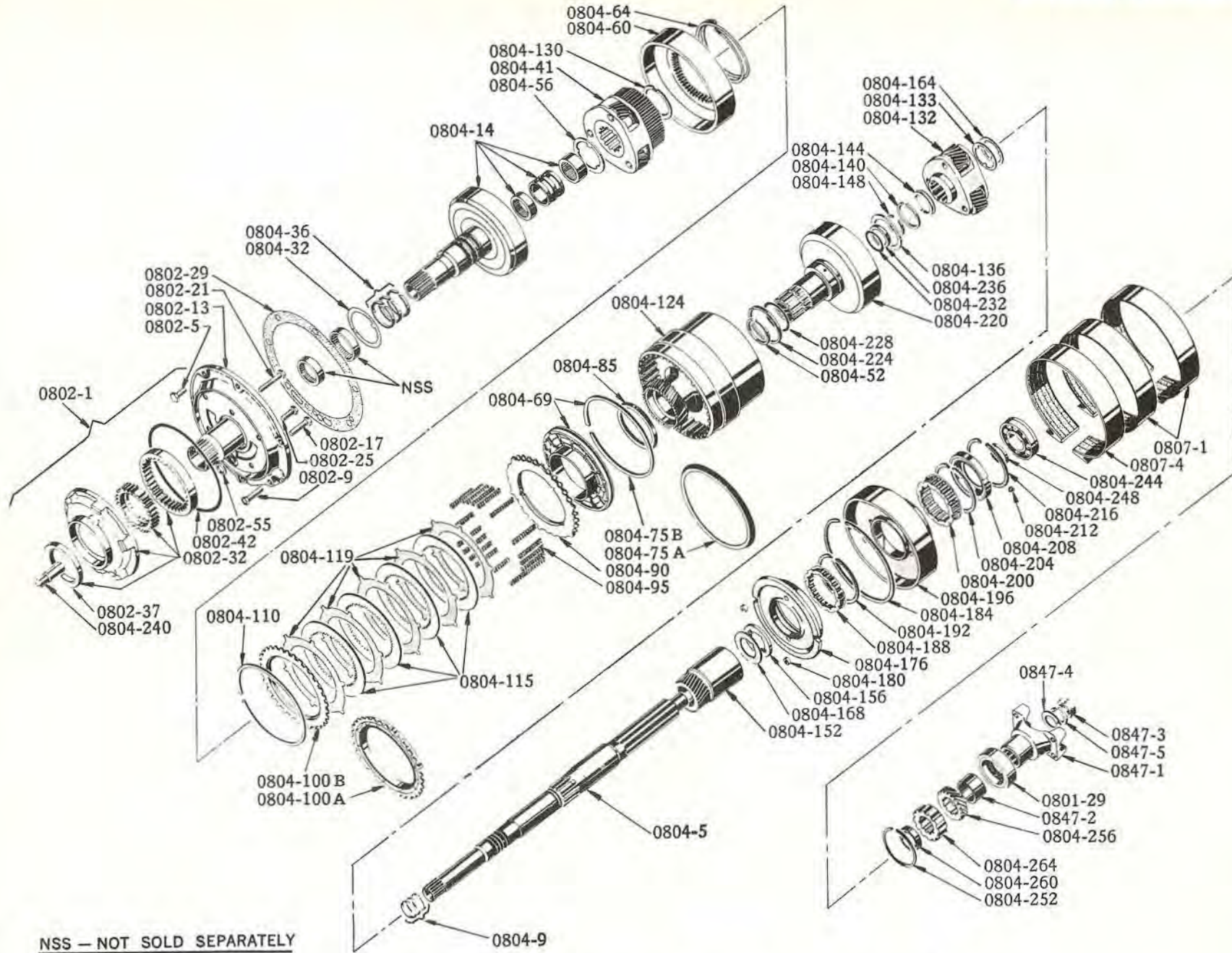


NSS - NOT SOLD SEPARATELY

**EXTENSION CASE, GOVERNOR, REAR OIL PUMP, SPEEDO. GEAR
HOUSING and PARKING BRAKE TOGGLE**

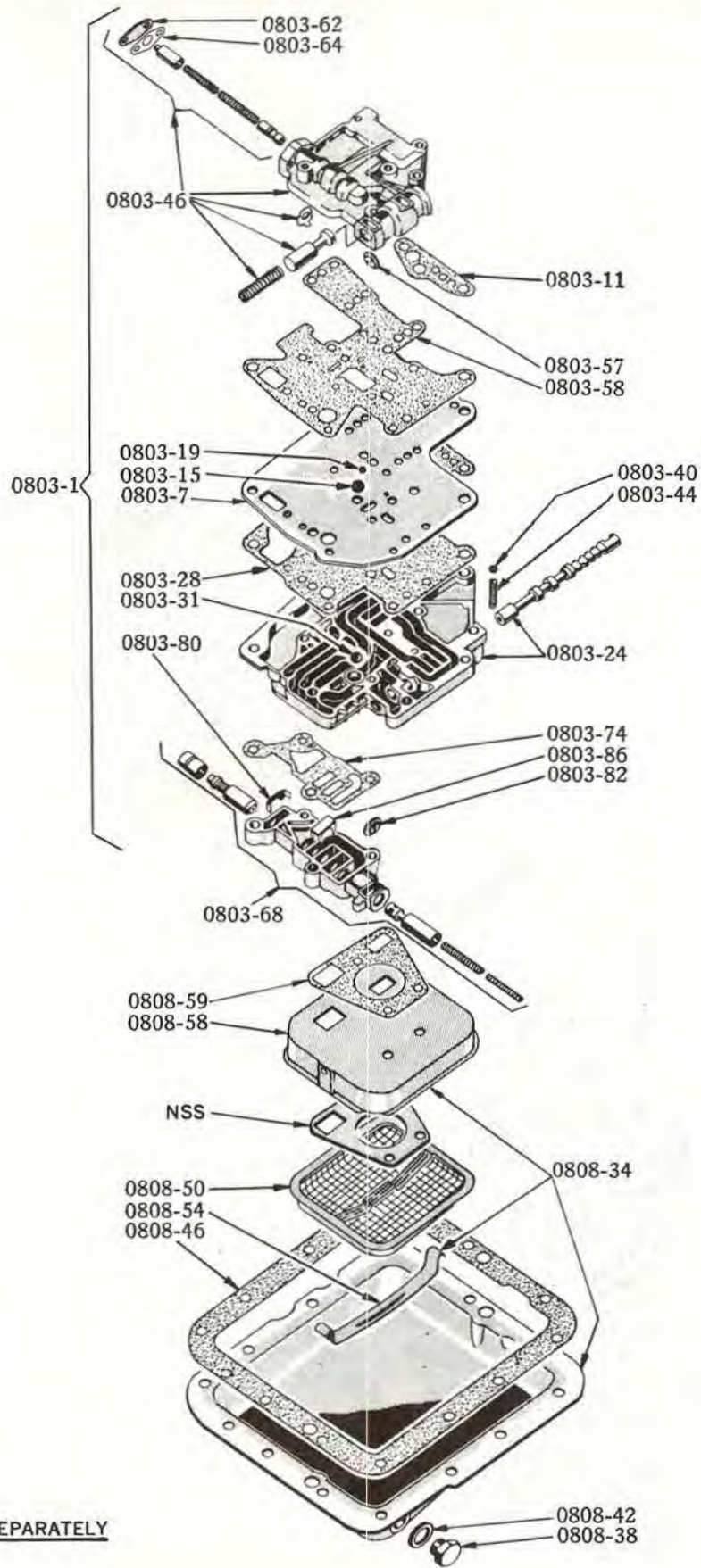


NSS — NOT SOLD SEPARATELY

FRONT PUMP, MAINSHAFT and U-JOINT FLANGE

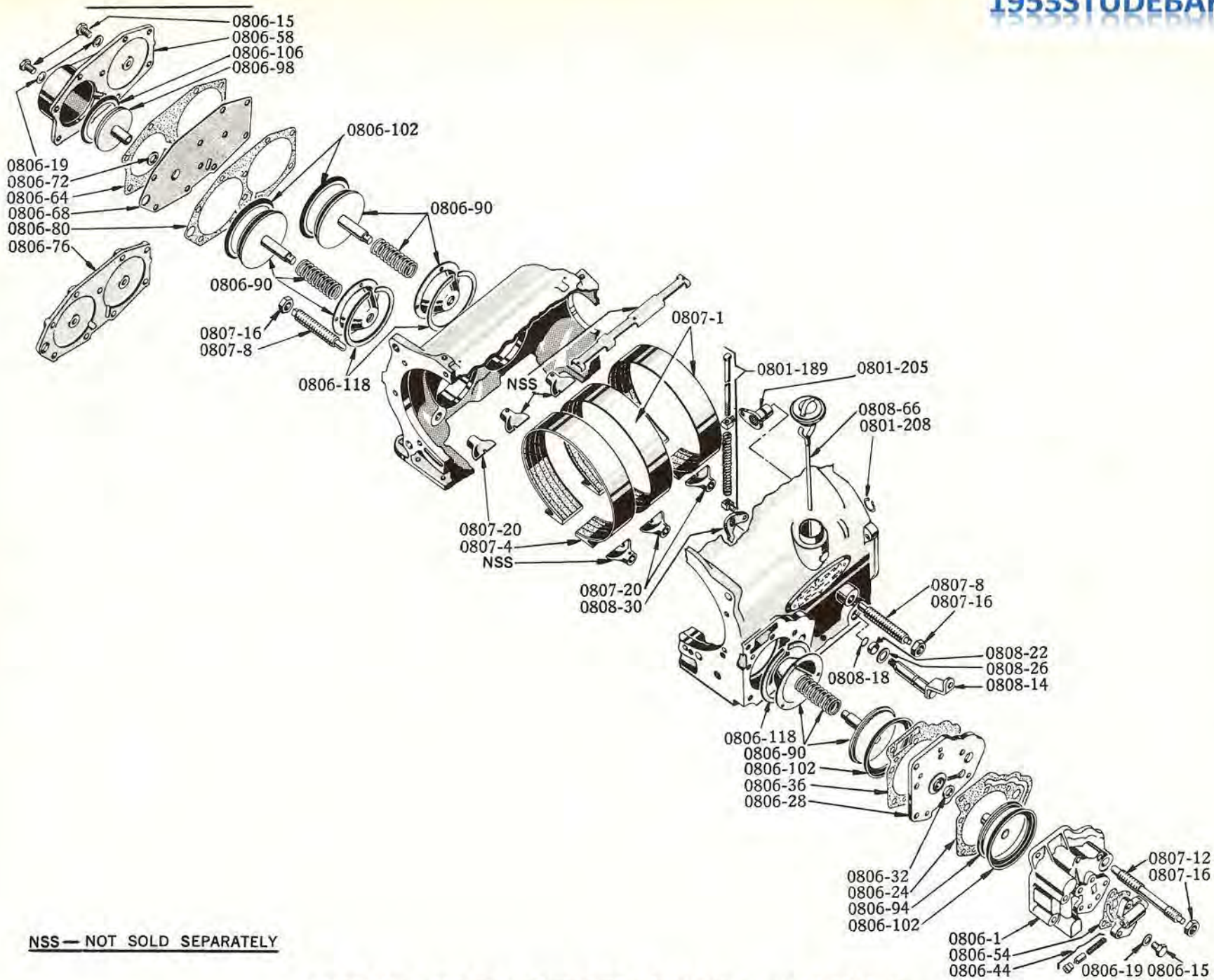
TRANSMISSION - AUTOMATIC

Plate 08-3



NSS - NOT SOLD SEPARATELY

VALVE BLOCK and OIL PAN

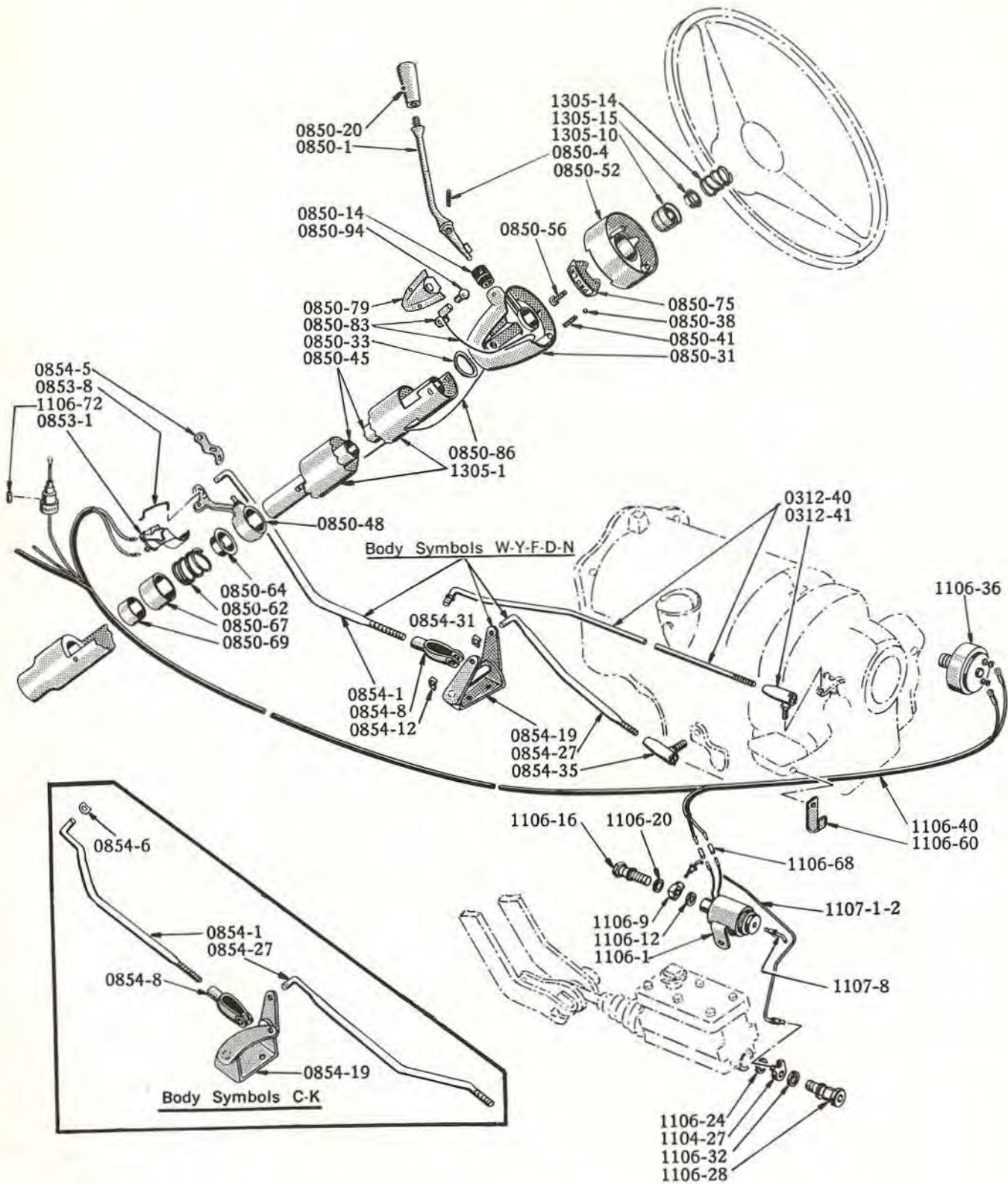


NSS — NOT SOLD SEPARATELY

TRANS. CASE, SERVO UNITS and BANDS

Plate 08-6

TRANSMISSION - AUTOMATIC



HAND CONTROL and ANTI-CREEP PARTS AUTOMATIC TRANSMISSION - Models 14G, 4H

TRANSMISSION - AUTOMATIC

0801

ILLUST. NUMBER	PART NUMBER	CHANGE	DESCRIPTION	MODELS	PER CAR	
0800- AUTOMATIC (AD.) TRANSMISSION						
	527100		TRANSMISSION ASSEMBLY, AUTOMATIC.	10G, 12G, 14G	1	
	529973		TRANSMISSION ASSEMBLY, AUTOMATIC.	H, 3H.	1	
	533568		TRANSMISSION ASSEMBLY, AUTOMATIC.	4H.	1	
	1-0724		SCREW, TO CONVERTER HOUSING 7/16"-14X1 1/2".	10G, 12G, 14G, H, 3H, 4H	2	
	527788		STUD, TO CONVERTER HOUSING 7/16"-14-20X1 1/2".	10G, 12G, 14G, H, 3H, 4H	2	
	256-07		NUT, STUD 7/16"-20.	10G, 12G, 14G, H, 3H, 4H	2	
	----		WASHER, LOCK, STUD 7/16".	10G, 12G, 14G, H, 3H, 4H	2	
	380-07		WASHER, LOCK, SCREW 7/16".	10G, 12G, 14G, H, 3H, 4H	2	
0801- EXTENSION OR GOVERNOR HOUSING (Plate 08-1)						
EXTENSION CASE						
	529979	●	EXTENSION CASE COMPLETE, TRANSMISSION	10G, 12G, 14G	1	
	529984	●	EXTENSION CASE COMPLETE, TRANSMISSION	H, 3H, 4H	1	
	547-02		PLUG, CLUTCH PRESSURE TAKE-OFF 1/8".	10G, 12G, 14G, H, 3H, 4H	1	
0801-18	529860		DOWEL SCREW, TO CASE 3/8"-16X2 1/4".	10G, 12G, 14G, H, 3H, 4H	1	
	1-0616		SCREW, TO CASE 3/8"-16X1".	10G, 12G, 14G, H, 3H, 4H	4	
	1-0648		SCREW, TO CASE 3/8"-16X3".	10G, 12G, 14G, H, 3H, 4H	1	
	380-06		WASHER, LOCK 3/8".	10G, 12G, 14G, H, 3H, 4H	6	
		●	- CONSISTS OF: CASE, GOVERNOR, REAR OIL PUMP, PARKING BRAKE, CONTROL PARTS, ETC.			
0801-22	529776	□	EXTENSION CASE ONLY, TRANSMISSION	10G, 12G, 14G, H, 3H, 4H	1	
			FOR FASTENING PARTS SEE EXTENSION CASE COMPLETE			
		□	INCLUDES: PINS, SEALS, BUSHINGS, PLUG AND VALVE SLEEVE.			
			INCL. IN GASKET SET			
0801-27	527956		GASKET, CASE.	534543	10G, 12G, 14G, H, 3H, 4H	1
0801-29	531032		OIL SEAL, CASE REAR		10G, 12G, 14G, H, 3H, 4H	1
GOVERNOR						
0801-30	529828		GOVERNOR (INCLUDES BEARING FIBRE WASHER).		10G, 12G, 14G, H, 3H, 4H	1
0801-33	529969		SPRING, GOVERNOR TENSION 3 1/32" LONG	10G, 12G, 14G	1	
0801-33	529980		SPRING, GOVERNOR TENSION 2 27/64" LONG.	H, 3H, 4H	1	
0801-38	529819		BEARING, GOVERNOR		10G, 12G, 14G, H, 3H, 4H	1
0801-42	529826		SNAP RING, RETAINING		10G, 12G, 14G, H, 3H, 4H	1
0801-46	531039		SHAFT, GOVERNOR - NOTE 1.		10G, 12G, 14G, H, 3H, 4H	1
0804-256	----		GEAR, REAR PUMP AND GOVERNOR DRIVE (SEE GROUP 0804)		10G, 12G, 14G, H, 3H, 4H	1
0801-249	NSS		GEAR, REAR PUMP AND GOVERNOR DRIVEN (PART OF REAR PUMP ASSEMBLY).		10G, 12G, 14G, H, 3H, 4H	1
			NSS - NOT SOLD SEPARATELY.			
0801-56	531415		LEVER, CONTROL SHAFT - BEFORE		10G, H	1
0801-60	55-#10-16		BOLT, CLAMP NO. 10-24X1" } TRANS. SERIALS.		10G, H	1
0801-63	529079		NUT, SELF LOCKING NO. 10-24 } S-CH-27,670		10G, H	1
					S-CO-83,331	
0801-67	531392		SHAFT AND LEVER, CONTROL - AFTER		10G, 12G, 14G, H, 3H, 4H	1
0801-71	529902		BUSHING, CONTROL SHAFT.		10G, 12G, 14G, H, 3H, 4H	1
0801-75	529527		SEAL, "O" RING OIL		10G, 12G, 14G, H, 3H, 4H	1
0801-80	529803		YOKE, CONTROL SHAFT		10G, 12G, 14G, H, 3H, 4H	1
0801-85	529810		SHOE, CONTROL SHAFT YOKE.		10G, 12G, 14G, H, 3H, 4H	2
0801-89	529812		SPRING, CONTROL SHAFT YOKE.		10G, 12G, 14G, H, 3H, 4H	1

NOTE { 1 - WHEN REPLACING GOVERNOR SHAFT BEFORE TRANSMISSION SERIAL S-CH-23,957 ON MODEL 10G; S-CO-61,800 ON MODEL H, ALSO ORDER 1-531040 SPEEDOMETER DRIVE GEAR.

0801

TRANSMISSION - AUTOMATIC

ILLUST. NUMBER	PART NUMBER	CHANGE	DESCRIPTION	MODELS	PER CAR
0801- EXTENSION OR GOVERNOR HOUSING-Cont'd.					
(Plate 08-1)					
GOVERNOR-Cont'd.					
0801-97	529971		CAM, LINK AND PLUNGER, CONTROL (USED LESS PART THROTTLE KICKDOWN).	H.3H.4H	1
0801-98	529804		CAM, CONTROL (USED W/PART THROTTLE KICKDOWN).	10G.12G.14G.4H.	1
	222-#10-3		SET SCREW, TO CONTROL SHAFT NO.10-32X3/16"	10G.12G.14G.H.3H.4H	1
	460-204		KEY, CONTROL SHAFT TO CAM.	10G.12G.14G.H.3H.4H	1
0801-101	219-0420		SCREW, CONTROL CAM STOP 1/4"-20X1 1/4".	10G.12G.14G.H.3H.4H	1
0801-103	529867		NUT, SELF LOCKING 1/4"-20.	10G.12G.14G.H.3H.4H	1
0801-105	309-04		NUT, CAP 1/4"-20	10G.12G.14G.H.3H.4H	1
0801-107	363-04		WASHER, PLAIN 1/4" - COPPER	10G.12G.14G.H.3H.4H	1
0801-110	529832		DETENT, CONTROL CAM	10G.12G.14G.H.3H.4H	1
0801-114	529833		SPRING, DETENT 10 1/2 COILS.	10G.12G.14G.H.3H.4H	1
0801-120	529813		VALVE AND FORK, GOVERNOR.	10G.12G.14G.H.3H.4H	1
0801-124	529815		DETENT, GOVERNOR VALVE.	10G.12G.14G.H.3H.4H	1
0801-128	529836		PLATE, VALVE STOP	10G.12G.14G.H.3H.4H	1
0801-131	529837	★	SPACER, PLATE 5/32" THICK	H.3H.4H	1
	41-0410		SCREW, TO CASE 1/4"-20X5/8"	10G.12G.14G.H.3H.4H	1
	380-04		WASHER, LOCK 1/4"	10G.12G.14G.H.3H.4H	1
0801-135	529834	★	ARM, DIRECT DRIVE PAWL RELEASE ROCKER	H.3H.4H	1
0801-146	529838	★	WASHER, SPACING 1/32"	H.3H.4H	1
0801-148	529839	★	SPRING, DIRECT DRIVE PAWL RELEASE ROCKER ARM TENSION.	H.3H.4H	1
0801-150	529835	★	PAWL, DIRECT DRIVE.	H.3H.4H	1
0801-154	529866	★	WASHER, PLAIN 7/32"	H.3H.4H	2
	----	★	COTTER, 1/16" X3/8"	H.3H.4H	1
★ - FOR EXTENSION CASE LESS PART THROTTLE KICKDOWN.					
PARKING BRAKE					
0801-163	529840		PAWL AND TOGGLE, PARKING BRAKE.	10G.12G.14G.H.3H.4H	1
0801-167	529844		PIN, PIVOT	10G.12G.14G.H.3H.4H	1
0801-170	529678	X	SEAL, "O" RING 23/64" I.D. - RUBBER	10G.12G.14G.H.3H.4H	1
0801-175	529848		SHAFT, PARKING BRAKE TOGGLE ARM	10G.12G.14G.H.3H.4H	1
0801-178	529850	X	SEAL, "O" RING 15/64" I.D. - RUBBER.	10G.12G.14G.H.3H.4H	1
0801-180	529849		SNAP RING 1/2"	10G.12G.14G.H.3H.4H	1
X - USED WITH EXTENSION CASE HAVING OPEN HOLES FOR PARKING BRAKE PIN AND SHAFT.					
	----		GEAR, PARKING BRAKE (SEE GROUP 0804).	10G.12G.14G.H.3H.4H	1
0801-183	529851		PISTON, PARKING BRAKE INTERLOCK	10G.12G.14G.H.3H.4H	1
0801-186	529854		SPRING, PISTON - 7 COILS	10G.12G.14G.H.3H.4H	1
0801-189	529681		ROD, PARKING BRAKE ACTUATING (INCLUDES SPRING, SWIVELS AND NUT)	} LOCATED IN TRANSMISSION CASE	10G.12G.14G.H.3H.4H
0801-205	529686		LEVER, PARKING BRAKE TOGGLE ARM SHAFT		10G.12G.14G.H.3H.4H
0801-208	529689		SNAP RING, 37/64" I.D.	10G.12G.14G.H.3H.4H	1
REAR OIL PUMP					
	529789		OIL PUMP COMPLETE, REAR	10G.12G.14G.H.3H.4H	1
	1-0536		SCREW, TO CASE 5/16"-18X2 1/4"	10G.12G.14G.H.3H.4H	1
	----		WASHER, LOCK 5/16"	10G.12G.14G.H.3H.4H	1

TRANSMISSION - AUTOMATIC

0802

ILLUST. NUMBER	PART NUMBER	CHANGE	DESCRIPTION	MODELS	PER CAR
0801- EXTENSION OR GOVERNOR HOUSING-Cont'd.					
(Plate 08-1)					
REAR OIL PUMP-Cont'd.					
				INCL. IN GASKET SET	
0801-217	527965		GASKET, REAR OIL PUMP534543 . 10G, 12G, 14G, H, 3H, 4H	1
0801-222	NSS		BODY, REAR OIL PUMP	10G, 12G, 14G, H, 3H, 4H	1
0801-226	NSS		SHAFT AND GEAR, GEAR OIL PUMP	10G, 12G, 14G, H, 3H, 4H	1
0801-230	NSS		GEAR, REAR OIL PUMP IDLER GEAR.	10G, 12G, 14G, H, 3H, 4H	1
0801-234	NSS		SHAFT, REAR OIL PUMP IDLER.	10G, 12G, 14G, H, 3H, 4H	1
0801-238	NSS		COVER, REAR OIL PUMP.	10G, 12G, 14G, H, 3H, 4H	1
	31-0412		SCREW, TO PUMP 1/4"-20X3/4".	10G, 12G, 14G, H, 3H, 4H	2
	----		WASHER, LOCK 1/4"	10G, 12G, 14G, H, 3H, 4H	2
			THICK COLOR		
0801-242	527966		GASKET, OIL PUMP COVER. . . .002 RED534543 . 10G, H	◆
0801-242	527967		GASKET, OIL PUMP COVER. . . .003 . GREEN OR CLEAR534543 . 10G, H	◆
0801-242	527968		GASKET, OIL PUMP COVER. . . .005 BLUE	10G, H	◆
0801-242	531409X1		GASKET, OIL PUMP COVER. . . .006 BLACK.534543 . 10G, 12G, 14G, H, 3H, 4H	◆
0801-242	531409X2		GASKET, OIL PUMP COVER. . . .009 BLACK.	10G, 12G, 14G, H, 3H, 4H	◆
	----		GEAR, REAR PUMP AND GOVERNOR DRIVE (SEE GROUP 0804)	10G, 12G, 14G, H, 3H, 4H	1
0801-249	NSS		GEAR, REAR PUMP AND GOVERNOR DRIVEN (PART OF REAR PUMP ASSEMBLY)	10G, 12G, 14G, H, 3H, 4H	1
			NSS - NOT SOLD SEPARATELY.		
SPEEDOMETER GEAR HOUSING					
0801-259	529830		HOUSING, GEAR	10G, 12G, 14G, H, 3H, 4H	1
0801-264	527962		GASKET, HOUSING534543 . 10G, 12G, 14G, H, 3H, 4H	1
0801-268	529831		COVER, HOUSING.	10G, 12G, 14G, H, 3H, 4H	1
	1-0532		SCREW, THRU HOUSING TO CASE 5/16"-18X2".	10G, 12G, 14G, H, 3H, 4H	2
	----		WASHER, LOCK 5/16".	10G, 12G, 14G, H, 3H, 4H	2
0801-272	527963		GASKET, COVER534543 . 10G, 12G, 14G, H, 3H, 4H	1
0802- FRONT PUMP AND COLLECTOR RING (Plate 08-2)					
0802-1	529568		PUMP AND COLLECTOR RING ASSEMBLY COMPLETE, FRONT.	10G, 12G, 14G, H, 3H, 4H	1
0802-5	1-0512		SCREW, TO CASE 5/16"-18X3/4"	10G, 12G, 14G, H, 3H, 4H	4
0802-9	1-0520		SCREW, TO CASE 5/16"-18X1 1/4"	10G, 12G, 14G, H, 3H, 4H	3
	380-05		WASHER, LOCK 5/16".	10G, 12G, 14G, H, 3H, 4H	7
0802-13	529899		COLLECTOR RING W/BEARINGS, FRONT PUMP	10G, 12G, 14G, H, 3H, 4H	1
0802-17	529869		SCREW, LOWER, TO PUMP BODY 5/16"-18X1 1/2"	10G, 12G, 14G, H, 3H, 4H	2
0802-21	529898		SCREW, CENTER, TO PUMP BODY 1/4"-20X1 3/4"	10G, 12G, 14G, H, 3H, 4H	1
0802-25	1-0514		SCREW, UPPER, TO PUMP BODY 5/16"-18X7/8"	10G, 12G, 14G, H, 3H, 4H	2
	380-05		WASHER, LOCK 5/16".	10G, 12G, 14G, H, 3H, 4H	4
	----		WASHER, LOCK 1/4"	10G, 12G, 14G, H, 3H, 4H	1
0802-29	527955		GASKET, COLLECTOR RING.534543 . 10G, 12G, 14G, H, 3H, 4H	1
0802-32	533298		BODY AND GEARS, FRONT PUMP.	10G, 12G, 14G, H, 3H, 4H	1
0802-37	529582		OIL SEAL, PUMP BODY	10G, 12G, 14G, H, 3H, 4H	1
0802-42	529585		OIL SEAL, PUMP "O" RING 5 1/2" I.D.	10G, 12G, 14G, H, 3H, 4H	1
0802-55	529527		OIL SEAL, PUMP OVERFLOW "O" RING 31/64" I.D.	10G, 12G, 14G, H, 3H, 4H	1

NOTE { ◆ - SELECT SIZE REQUIRED.

0803

TRANSMISSION - AUTOMATIC

ILLUST. NUMBER	PART NUMBER	CHANGE ✓	DESCRIPTION	MODELS	PER CAR
0803- VALVE BLOCK (Plate 08-3)					
0803-1	529909		VALVE BLOCK COMPLETE. TRANSMISSION - CONSISTS OF: VALVE BODIES, BASE PLATE, OIL FILTER PARTS, RELIEF VALVE, CONTROL, ETC.	10G, 12G, 14G, H, 3H, 4H	1
	31-0518		SCREW, TO CASE 5/16"-18X1 1/8"	10G, 12G, 14G, H, 3H, 4H	5
	1-0530		SCREW, TO CASE 5/16"-18X1 7/8"	10G, 12G, 14G, H, 3H, 4H	2
	384-05		WASHER, LOCK 5/16"	10G, 12G, 14G, H, 3H, 4H	7
	534544		GASKET SET, VALVE BLOCK - CONSISTS OF 1 EACH OF THE FOLLOWING GASKETS	10G, 12G, 14G, H, 3H, 4H	1
	529733		BASE PLATE REAR		
	529736		MANIFOLD PLATE		
	529750		CONVERTER VALVE BODY		
	529749		CONVERTER VALVE BODY COVER		
	529756		RELIEF VALVE BODY		
	529770		OIL FILTER SCREEN SHROUD		
	527783		OIL PAN		
	527961		DRAIN PLUG		
0803-7	529730		PLATE, BASE	10G, 12G, 14G, H, 3H, 4H	1
			INCL. IN GASKET SET		
0803-11	529733		GASKET, BASE PLATE REAR	10G, 12G, 14G, H, 3H, 4H	1
			534543, 4		
0803-15	470-12		BALL CHECK, BASE PLATE REAR PUMP.	10G, 12G, 14G, H, 3H, 4H	1
0803-19	470-05		BALL CHECK, BASE PLATE CONVERTER.	10G, 12G, 14G, H, 3H, 4H	1
0803-24	529734		PLATE W/SELECTOR VALVE, MANIFOLD.	10G, 12G, 14G, H, 3H, 4H	1
0803-28	529736		GASKET, MANIFOLD PLATE.	10G, 12G, 14G, H, 3H, 4H	1
			534543, 4.		
0803-31	470-12		BALL CHECK, MANIFOLD PLATE FRONT PUMP	10G, 12G, 14G, H, 3H, 4H	1
0803-40	470-08		BALL, SELECTOR VALVE DETENT	10G, 12G, 14G, H, 3H, 4H	1
0803-44	529739		SPRING, DETENT	10G, 12G, 14G, H, 3H, 4H	1
0803-46	529741		BODY AND VALVES COMPLETE, CONVERTER AND REVERSE INTERLOCK .	10G, 12G, 14G, H, 3H, 4H	1
	1-0424		SCREW, TO MANIFOLD PLATE 1/4"-20X1 1/2".	10G, 12G, 14G, H, 3H, 4H	1
	384-04		WASHER, LOCK 1/4"	10G, 12G, 14G, H, 3H, 4H	1
0803-58	529750		GASKET, CONVERTER VALVE BODY.	10G, 12G, 14G, H, 3H, 4H	1
			534543, 4.		
0803-60	529753		RETAINER, REVERSE INTERLOCK VALVE SPRING.	10G, 12G, 14G, H, 3H, 4H	1
0803-62	529748		COVER, CONVERTER VALVE BODY	10G, 12G, 14G, H, 3H, 4H	1
	825-#10-8		SCREW, TO VALVE BODY NO. 10-24X1/2.	10G, 12G, 14G, H, 3H, 4H	2
0803-64	529749		GASKET, CONVERTER VALVE BODY COVER.	10G, 12G, 14G, H, 3H, 4H	1
			534543, 4.		
0803-68	529754		BODY COMPLETE, FRONT AND REAR PUMP RELIEF VALVE	10G, 12G, 14G, H, 3H, 4H	1
	1-0432		SCREW, TO CONVERTER VALVE BODY 1/4" - 20X2"	10G, 12G, 14G, H, 3H, 4H	2
	384-04		WASHER, LOCK 1/4"	10G, 12G, 14G, H, 3H, 4H	2
0803-74	529756		GASKET, FRONT AND REAR PUMP RELIEF VALVE BODY . .	10G, 12G, 14G, H, 3H, 4H	1
			534543, 4.		
0803-80	529761		RETAINER, FRONT PUMP RELIEF VALVE PISTON SPRING	10G, 12G, 14G, H, 3H, 4H	1
0803-82	529753		RETAINER, REAR PUMP VALVE SPRING.	10G, 12G, 14G, H, 3H, 4H	1
0803-86	531578		SCREEN, REAR PUMP RELIEF VALVE.	10G, 12G, 14G, H, 3H, 4H	1

TRANSMISSION - AUTOMATIC

0804

ILLUST. NUMBER	PART NUMBER	CHANGE	DESCRIPTION	MODELS	PER CAR
0804- GEAR SET OR MAIN SHAFT ASSEMBLY (Plate 08-2)					
MAIN SHAFT					
	529908	●	MAIN SHAFT ASSEMBLY COMPLETE.	10G, 12G, 14G	1
	529586	●	MAIN SHAFT ASSEMBLY COMPLETE.	H, 3H, 4H	1
		●	- CONSISTS OF: MAIN SHAFT, CLUTCH, PLANETARY UNITS, FREE WHEEL UNITS, BEARING, ETC.		
0804-5	529587		MAIN SHAFT.	10G, 12G, 14G, H, 3H, 4H	1
0804-9	529555		SEAL, MAIN SHAFT 1" DIA.	10G, 12G, 14G, H, 3H, 4H	3
FRONT RING GEAR, CARRIER AND REVERSE DRUM					
0804-14	529623		RING GEAR W/BEARINGS, MAIN SHAFT FRONT.	10G, 12G, 14G, H, 3H, 4H	1
			THICK		
0804-32	529859X1		THRUST WASHER, FRONT RING GEAR FRONT.	10G, 12G, 14G, H, 3H, 4H	*
0804-32	529859X2		THRUST WASHER, FRONT RING GEAR FRONT.	10G, 12G, 14G, H, 3H, 4H	*
0804-32	529859X3		THRUST WASHER, FRONT RING GEAR FRONT.	10G, 12G, 14G, H, 3H, 4H	*
0804-32	529859X4		THRUST WASHER, FRONT RING GEAR FRONT.	10G, 12G, 14G, H, 3H, 4H	*
0804-36	529600		OIL SEAL, FRONT RING GEAR 1 5/8" DIA.	10G, 12G, 14G, H, 3H, 4H	3
0804-41	533905		CARRIER COMPLETE, FRONT PLANETARY - CONSISTS OF:	10G, 12G, 14G, H, 3H, 4H	1
			1 - CARRIER 57 - BEARING ROLLER		
			3 - PINION 6 - ROLLER SPACER		
			3 - SHAFT		
0804-52	529628		SNAP RING, 1 1/2" I.D. (ON REAR RING GEAR)	10G, 12G, 14G, H, 3H, 4H	1
0804-56	529622		THRUST WASHER, FRONT PLANETARY CARRIER.	10G, 12G, 14G, H, 3H, 4H	1
0804-60	529647		DRUM, REVERSE BRAKE	10G, 12G, 14G, H, 3H, 4H	1
0804-64	529648		SNAP RING 3 15/16" O.D.	10G, 12G, 14G, H, 3H, 4H	1
MULTIPLE DISC CLUTCH (MDC)					
0804-69	531356		PISTON AND SEAL KIT, MDC.	10G, 12G, 14G, H, 3H, 4H	1
0804-75A	529645		SEAL, OUTER, MDC PISTON - RUBBER.	10G, 12G, 14G, H	1
0804-75B	529977		SEAL, OUTER, MDC PISTON - STEEL	10G, 12G, 14G, H, 3H, 4H	1
0804-85	529646		SEAL, INNER, MDC PISTON - RUBBER.	10G, 12G, 14G, H, 3H, 4H	1
0804-90	529637		PLATE, MDC RETRACTOR SPRING - INNER	10G, 12G, 14G, H, 3H, 4H	1
0804-95	529640		SPRING, MDC RETRACTOR	10G, 12G, 14G, H, 3H, 4H	12
0804-100A	529910		RETAINER, MDC RETRACTOR SPRING - OUTER.	10G, 12G, 14G	1
0804-100B	529641		RETAINER, MDC RETRACTOR SPRING - OUTER.	H, 3H, 4H	1
0804-100	529642		SNAP RING 5 7/32".	10G, 12G, 14G, H, 3H, 4H	1
0804-115	529643		DISC, MDC FRICTION.	10G, 12G, 14G	3
0804-115	529643		DISC, MDC FRICTION.	H, 3H, 4H	4
0804-119	529644		PLATE, MDC DISC	10G, 12G, 14G	4
0804-119	529644		PLATE, MDC DISC	H, 3H, 4H	5
FRONT SUN GEAR AND LOW BRAKE DRUM					
0804-124	529629		SUN GEAR AND LOW BRAKE DRUM, FRONT.	10G, 12G, 14G, H, 3H, 4H	1
0804-130	529634		THRUST WASHER, FRONT SUN GEAR 1 47/64" O. D.	10G, 12G, 14G, H, 3H, 4H	1

NOTE { * - USED AS REQUIRED.

0804

TRANSMISSION - AUTOMATIC

ILLUST. NUMBER	PART NUMBER	CHANGE	DESCRIPTION	MODELS	PER CAR
0804- GEAR SET OR MAIN SHAFT ASSEMBLY-Cont'd.					
(Plate 08-2)					
REAR CARRIER AND SUN GEAR					
0804-132	531400	●	CARRIER AND PINIONS, REAR PLANETARY	10G, 12G, 14G, H, 3H, 4H	1
0804-133	531402		WASHER, SPACER - STEEL, (FOR COUNTERBORED TYPE CARRIER).	10G, 12G, 14G, H, 3H, 4H	1
● - 2 TYPES OF CONSTRUCTION ARE USED: COUNTERBORED AND NOT COUNTERBORED. IF CARRIER IS COUNTERBORED, 531402 WASHER MUST BE USED IN ADDITION TO 529612 THRUST WASHER.					
0804-136	529601		THRUST WASHER, FRONT, REAR PLANETARY CARRIER.	10G, 12G, 14G, H, 3H, 4H	1
0804-140	529600		SEAL, REAR PLANETARY CARRIER RING 1 5/8" O.D.	10G, 12G, 14G, H, 3H, 4H	1
0804-144	529614		RETAINER, SEAL	10G, 12G, 14G, H, 3H, 4H	1
0804-148	529615		SNAP RING, RETAINER	10G, 12G, 14G, H, 3H, 4H	1
0804-152	529609		SUN GEAR AND BUSHINGS, REAR	10G, 12G, 14G, H, 3H, 4H	1
0804-156	529660		WASHER, SPACING 2 5/32" O.D. - STEEL	10G, 12G, 14G, H, 3H, 4H	1
0804-164	529612		THRUST WASHER, FRONT, REAR SUN GEAR	10G, 12G, 14G, H, 3H, 4H	1
0804-168	529661		THRUST WASHER, REAR, REAR SUN GEAR.	10G, 12G, 14G, H, 3H, 4H	1
0804-176	531036		PLATE, LOW BRAKE DRUM	10G, 12G, 14G, H, 3H, 4H	1
0804-180	529655		DOWEL, TO DRUM 3/8" O.D.	10G, 12G, 14G, H, 3H, 4H	2
0804-184	529642		SNAP RING 5 17/32" O.D.	10G, 12G, 14G, H, 3H, 4H	1
0804-188	529545		FREE WHEEL UNIT, REVERSE (LOCATED IN LOW DRUM PLATE). . . .	10G, 12G, 14G, H, 3H, 4H	1
0804-192	529650		SNAP RING 3 1/16" O.D.	10G, 12G, 14G, H, 3H, 4H	1
FORWARD BRAKE DRUM AND REAR RING GEAR					
0804-196	529664		DRUM, FORWARD BRAKE (INCLUDES BUSHING AND HUB).	10G, 12G, 14G, H, 3H, 4H	1
0804-200	529657		FREE WHEEL UNIT, FORWARD.	10G, 12G, 14G, H, 3H, 4H	1
0804-204	529650		SNAP RING 3 1/16" O.D.	10G, 12G, 14G, H, 3H, 4H	1
0804-208	529658		SPACER, FORWARD FREE WHEEL UNIT PLATE - BRONZE.	10G, 12G, 14G, H, 3H, 4H	1
0804-212	529659		DOWEL, SPACER.	10G, 12G, 14G, H, 3H, 4H	1
0804-216	529650		SNAP RING, SPACER 3 1/16" O.D.	10G, 12G, 14G, H, 3H, 4H	1
0804-220	529602		RING GEAR AND BUSHING, REAR (INCLUDES INNER "O" RING) . . .	10G, 12G, 14G, H, 3H, 4H	1
0804-224	529972		SEAL, REAR RING GEAR - CAST IRON.	10G, 12G, 14G, H, 3H, 4H	1
0804-228	529606		SEAL, REAR RING GEAR OUTER "O" RING 1 5/8" I.D. - RUBBER. .	10G, 12G, 14G, H, 3H, 4H	1
0804-232	529604		SEAL, REAR RING GEAR INNER "O" RING 1 7/64" I.D. - RUBBER .	10G, 12G, 14G, H, 3H, 4H	1
0804-236	529605		RETAINER, INNER "O" RING SEAL 1 3/16" I.D.	10G, 12G, 14G, H, 3H, 4H	1
TRANSFER TUBE, REAR BEARING, GOVERNOR AND PARKING GEAR					
0804-240	529375		TUBE, MAINSHAFT OIL TRANSFER.	10G, 12G, 14G, H, 3H, 4H	1
0804-244	529662		BEARING, MAINSHAFT REAR	10G, 12G, 14G, H, 3H, 4H	1
0804-248	529663		SPACER 5/32" WIDE.	10G, 12G, 14G, H, 3H, 4H	1
0804-252	529668		SNAP RING, BEARING 2 5/16" I.D.	10G, 12G, 14G, H, 3H, 4H	1
0804-256	529855		GEAR, MAINSHAFT GOVERNOR DRIVE.	10G, 12G, 14G, H, 3H, 4H	1
0804-260	529856		SPACER 13/32" WIDE	10G, 12G, 14G, H, 3H, 4H	1
0804-264	529857		GEAR, MAINSHAFT PARKING BRAKE	10G, 12G, 14G, H, 3H, 4H	1

TRANSMISSION - AUTOMATIC

0806

ILLUST. NUMBER	PART NUMBER	CHANGE	DESCRIPTION	MODELS	PER CAR
0806- SERVO UNITS (Plate 08-4)					
REVERSE BRAKE CYLINDER AND SHUTTLE VALVE					
				INCL. IN GASKET SET	
0806-1	529710		CYLINDER W/PLUG, OUTER REVERSE BRAKE.	10G, 12G, 14G, H, 3H, 4H	1
	553-04		PLUG, LOWER 1/4"-18.	10G, H	1
	547-02		PLUG, LOWER 1/8"-27.	10G, 12G, 14G, H, 3H, 4H	1
	547-04		PLUG, UPPER 1/4" 18.	10G, H	1
	1-0548		SCREW, TO CASE 5/16"-18X3"	10G, 12G, 14G, H, 3H, 4H	3
	1-0536		SCREW, TO CASE 5/16"-18X2 1/4"	10G, 12G, 14G, H, 3H, 4H	3
	1-0516		SCREW, TO CASE 5/16"-18X1"	10G, 12G, 14G, H, 3H, 4H	1
	380-05		WASHER, LOCK 5/16"	10G, 12G, 14G, H, 3H, 4H	5
	384-05		WASHER, SHAKEPROOF 5/16"	10G, 12G, 14G, H, 3H, 4H	1
0806-15	1-068		SCREW, REVERSE SERVO PRESSURE TAKE-OFF 3/8"-16X1/2"	10G, 12G, 14G, H, 3H, 4H	1
0806-19	527778		WASHER, PLAIN 3/8" - COPPER. 534543 .	10G, 12G, 14G, H, 3H, 4H	1
0806-24	527958		GASKET, REVERSE BRAKE OUTER CYLINDER. 534543 .	10G, 12G, 14G, H, 3H, 4H	1
0806-28	529712		PLATE, REVERSE BRAKE CYLINDER	10G, 12G, 14G, H, 3H, 4H	1
0806-32	529527		SEAL, "O" RING 31/64" I.D. - RUBBER.	10G, 12G, 14G, H, 3H, 4H	1
0806-36	527957		GASKET, REVERSE BRAKE CYLINDER PLATE. 534543 .	10G, 12G, 14G, H, 3H, 4H	1
0806-44	529724		SHUTTLE VALVE COMPLETE, REVERSE	10G, 12G, 14G, H, 3H, 4H	1
	31-0412		SCREW, TO CYLINDER 1/4"-20X3/4"	10G, 12G, 14G, H, 3H, 4H	2
	384-04		WASHER, LOCK 1/4"	10G, 12G, 14G, H, 3H, 4H	2
0806-54	527964		GASKET, SHUTTLE VALVE 534543 .	10G, 12G, 14G, H, 3H, 4H	1
LOW AND FORWARD BRAKE CYLINDER					
0806-58	529706		CYLINDER, OUTER, LOW BRAKE (FORWARD COVER INTEGRAL)	H, 3H, 4H	1
	1-0516		SCREW, TO CASE 5/16"-18X1"	H, 3H, 4H	9
	380-05		WASHER, LOCK 5/16"	H, 3H, 4H	9
0806-15	1-068		SCREW, LOW AND FORWARD SERVO PRESSURE TAKE-OFF 3/8"-16X1/2"	10G, 12G, 14G, H, 3H, 4H	2
0806-19	527778		WASHER, PLAIN 3/8" - COPPER 534543 .	10G, 12G, 14G, H, 3H, 4H	2
0806-64	527960		GASKET, LOW BRAKE OUTER CYLINDER. 534543 .	H, 3H, 4H	1
0806-68	529707		PLATE, LOW AND FORWARD BRAKE CYLINDER	H, 3H, 4H	1
0806-72	529527		SEAL, "O" RING 31/64" I.D. - RUBBER	H, 3H, 4H	1
0806-76	529919		COVER, LOW AND FORWARD BRAKE CYLINDER	10G, 12G, 14G	1
	1-0516		SCREW, TO CASE 5/16"-18X1"	10G, 12G, 14G	9
	380-05		WASHER, LOCK 5/16"	10G, 12G, 14G	9
0806-80	527959		GASKET, LOW AND FORWARD BRAKE CYLINDER PLATE OR COVER 534543 .	10G, 12G, 14G, H, 3H, 4H	1
PISTONS					
0806-90	529690		PISTON COMPLETE, INNER, BRAKE - CONSISTS OF: PISTON, SPRING, SPRING RETAINER AND STRUT.	10G, 12G, 14G, H, 3H, 4H	3
0806-94	529705		PISTON AND ROD, OUTER, REVERSE BRAKE.	10G, 12G, 14G, H, 3H, 4H	1
0806-98	529701		PISTON AND ROD, OUTER, LOW BRAKE.	H, 3H, 4H	1
0806-102	529697		SEAL, PISTON 3 1/4" O.D. - RUBBER (FOR 529690, 529705)	10G, 12G, 14G, H, 3H, 4H	4
0806-106	529704		SEAL, PISTON 2 1/2" O.D. - RUBBER (FOR 529701)	H, 3H, 4H	1
0806-118	529698		SNAP RING 3 7/16" (USED ONLY WHEN RING GROOVE IS CAST IN CASE)	10G, 12G, 14G, H, 3H, 4H	3

0807

TRANSMISSION - AUTOMATIC

ILLUST. NUMBER	PART NUMBER	CHANGE	DESCRIPTION	MODELS	PER CAR
0807- SERVO BANDS (Plate 08-4)					
0807-1	529719		BAND AND LINING, REVERSE BRAKE.	10G, 12G, 14G, H, 3H, 4H	1
0807-4	529714		BAND AND LINING, LOW AND FORWARD BRAKE.	10G, 12G, 14G, H, 3H, 4H	2
0807-8	529723		SCREW, REVERSE AND FORWARD BAND ADJUSTING 3 5/8" LONG	10G, 12G, 14G, H, 3H, 4H	2
0807-12	529722		SCREW, LOW BAND ADJUSTING 5 1/8" LONG.	10G, 12G, 14G, H, 3H, 4H	1
0807-16	256-08		NUT, LOCK 1/2"-20	10G, 12G, 14G, H, 3H, 4H	3
0807-20	529728		STRUT, BRAKE BAND	10G, 12G, 14G, H, 3H, 4H	3
0808- TRANSMISSION CASE (Plates 08-3, 4)					
				INCL. IN GASKET SET	
531031			CASE ASSEMBLY, TRANSMISSION - CONSISTS OF:	10G, 12G, 14G, H, 3H, 4H	1
			1- NSS CASE (WITH BAND GUIDE)		
			1-529674 SELECTOR CONTROL SHAFT		
			1-529681 BRAKE ACTUATING ROD		
			1-529686 BRAKE TOGGLE ARM LEVER		
			1-529689 BRAKE TOGGLE ARM LEVER SNAP RING		
			1-529678 SELECTOR CONTROL SHAFT "O" RING SEAL		
			1-529677 SELECTOR CONTROL SHAFT GASKET		
			1-529680 SELECTOR CONTROL SHAFT INNER LEVER		
			1-529679 SELECTOR CONTROL SHAFT WASHER		
			1-361-05 WASHER		
			1-380-05 WASHER		
			1-252-05 NUT		
			NSS - NOT SOLD SEPARATELY.		
553-02			PLUG, FRONT PUMP AND MDC PRESSURE TAKE-OFF.	10G, 12G, 14G, H, 3H, 4H	2
0808-14	529674		SHAFT AND LEVER, SELECTOR CONTROL	10G, 12G, 14G, H, 3H, 4H	1
0808-18	529678		SEAL, "O" RING 23/64" - RUBBER 534543	10G, 12G, 14G, H, 3H, 4H	1
0808-22	529677		GASKET OR PACKING - CORK 534543	10G, 12G, 14G, H, 3H, 4H	1
0808-26	529679		WASHER, PLAIN 17/32"	10G, 12G, 14G, H, 3H, 4H	1
0808-30	529680		LEVER, SELECTOR CONTROL SHAFT INNER	10G, 12G, 14G, H, 3H, 4H	1
	252-05		NUT, TO SELECTOR CONTROL SHAFT 5/16"-24.	10G, 12G, 14G, H, 3H, 4H	1
	361-05		WASHER, PLAIN 5/16"	10G, 12G, 14G, H, 3H, 4H	1
	380-05		WASHER, LOCK 5/16".	10G, 12G, 14G, H, 3H, 4H	1
534543			GASKET SET, TRANSMISSION - CONSISTS OF:	10G, 12G, 14G, H, 3H, 4H	1
			1-529678 SEAL, SELECTOR CONTROL SHAFT 1-WASHER, PRESSURE TAKE-OFF SCREW AND 1 EACH OF THE FOLLOWING GASKETS:		
			527955 OIL COLLECTOR RING		
			529677 SELECTOR CONTROL SHAFT		
			527960 LOW BRAKE OUTER CYL.		
			527959 LOW BRAKE CYL. PLATE OR COVER		
			527958 REVERSE BRAKE CYL.		
			527957 REVERSE BRAKE CYL. PLATE		
			527964 REVERSE BRAKE CYL. SHUTTLE VALVE BODY		
			527956 EXTENSION CASE		
			527965 REAR PUMP BODY		
			527962 SPEEDOMETER GEAR HOUSING		
			527963 SPEEDOMETER GEAR HOUSING COVER		
			529733 VALVE BLOCK BASE PLATE REAR		
			529736 VALVE MANIFOLD PLATE		
			529750 CONVERTER CONTROL VALVE BODY		
			529749 CONVERTER CONTROL VALVE COVER		
			529756 RELIEF VALVE BODY		
			529770 OIL FILTER SCREEN SHROUD		
			527783 OIL PAN		
			527961 DRAIN PLUG		
			527966 REAR OIL PUMP COVER		
			527967 REAR OIL PUMP COVER		
			531409X1 REAR OIL PUMP COVER		

TRANSMISSION - AUTOMATIC

0850

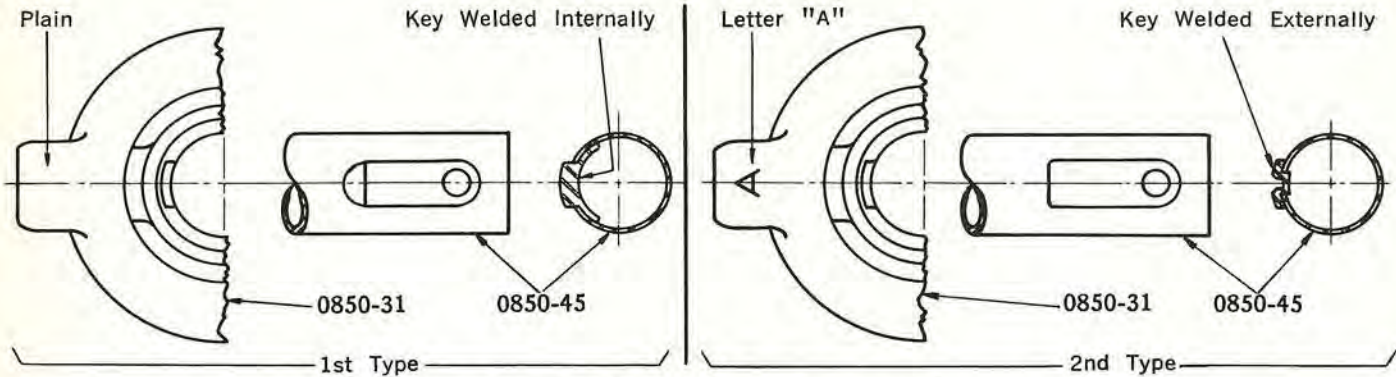
ILLUST. NUMBER	PART NUMBER	CHANGE	DESCRIPTION	MODELS	PER CAR
0808- TRANSMISSION CASE-Cont'd. (Plates 08-3,4)					
OIL PAN					
0808-34	529975		OIL PAN KIT, TRANSMISSION - CONSISTS OF: 1- NSS OIL PAN AND PLUG 1-529913 RETAINER 1-529914 SHROUD 14-31-0510 SCREW	10G, 12G, 14G, H, 3H, 4H	1
0808-34	534584		OIL PAN KIT, TRANSMISSION - CONSISTS OF: 1- NSS OIL PAN AND PLUG 14-31-0510 SCREW		
	31-058		SCREW, TO CASE 5/16"-18X1/2" (FOR PAN LESS REINFORCEMENT)	10G, 12G, 14G, H, 3H, 4H	14
	31-0510		SCREW, TO CASE 5/16"-18X5/8" (FOR PAN WITH REINFORCEMENT)	10G, 12G, 14G, H, 3H, 4H	14
	380-05		WASHER, LOCK 5/16"	10G, 12G, 14G, H, 3H, 4H	14
NSS - NOT SOLD SEPARATELY.					
			INCL. IN GASKET SET		
0808-38	529774		PLUG, DRAIN 5/8" -18.	10G, 12G, 14G, H, 3H, 4H	1
0808-42	527961		GASKET, PLUG 41/64". 534543,4	10G, 12G, 14G, H, 3H, 4H	1
0808-46	527783		GASKET, OIL PAN 534543,4	10G, 12G, 14G, H, 3H, 4H	1
0808-50	529767		SCREEN, OIL PAN	10G, 12G, 14G, H, 3H, 4H	1
0808-54	529913		RETAINER, OIL PAN SCREEN.	10G, 12G, 14G, H, 3H, 4H	1
0808-58	529914		SHROUD, OIL PAN SCREEN.	10G, 12G, 14G, H, 3H, 4H	1
	1-0420		SCREW, TO BASE PLATE 1/4"-20X1 1/4".	10G, 12G, 14G, H, 3H, 4H	3
	380-04		WASHER, LOCK 1/4"	10G, 12G, 14G, H, 3H, 4H	3
0808-59	529770		GASKET, OIL PAN SCREEN SHROUD	10G, 12G, 14G, H, 3H, 4H	1
0808-66	529082		GAGE, OIL LEVER	10G, 12G, 14G, H, 3H, 4H	1
0847- TRANSMISSION UNIVERSAL JOINT FLANGE (Plates 08-1,2)					
0847-1	196406		FLANGE, UNIVERSAL JOINT	10G, 12G, 14G, H, 3H, 4H	1
0847-2	529858		SPACER, TUBULAR 31/32" LONG.	10G, 12G, 14G, H, 3H, 4H	1
0847-3	179233		NUT, TO SHAFT 3/4"-16.	10G, 12G, 14G, H, 3H, 4H	1
0847-4	180747		WASHER, PLAIN 49/64".	10G, 12G, 14G, H, 3H, 4H	1
0847-5	380-12		WASHER, LOCK 3/4"	10G, 12G, 14G, H, 3H, 4H	1
0850- HAND CONTROL SELECTOR LEVER, SHAFT AND INDICATOR (Plates 08-5,6)					
0850-1	530453		LEVER, SELECTOR	10G, 12G, H, 3H.	1
0850-1	532996P		LEVER, SELECTOR	14G, 4H.	1
0850-4	527488		PIN, PIVOT 1 9/64" LONG.	10G, 12G, H, 3H.	1
0850-4	532886		PIN, PIVOT 1" LONG	14G, 4H.	1
0850-14	527417		GROMMET, SELECTOR LEVER - RUBBER.	10G, 12G, H, 3H.	1
0850-14	532551		GROMMET, SELECTOR LEVER - RUBBER.	14G, 4H.	1
0850-16	527447		SPRING, SELECTOR LEVER RETURN	10G, 12G, H, 3H.	1
0850-18	527515		PIN, SPRING 3/16"x17/32"	10G, 12G, H, 3H.	1
0850-20	524623		KNOB, SELECTOR LEVER.	10G, 12G, H, 3H.	1
0850-20	533343		KNOB, SELECTOR LEVER.	14G, 4H.	1
0850-24	522898		SPRING, RETAINER	10G, 12G, H, 3H.	1
0850-28	194805		FERRULE, SELECTOR LEVER KNOB.	10G, 12G, H, 3H.	1

0850

TRANSMISSION - AUTOMATIC

ILLUST. NUMBER	PART NUMBER	CHANGE	DESCRIPTION	MODELS	PER CAR
----------------	-------------	--------	-------------	--------	---------

0850- HAND CONTROL SELECTOR LEVER, SHAFT AND INDICATOR Cont'd. (plates 08-5,6)



Cross Section of Lever Support and Shaft

0850-31	530438P	SUPPORT. SELECTOR LEVER	10G. 12G. H. 3H.	1
0850-31	▲ 532508P	SUPPORT. SELECTOR LEVER (LESS POWER STEER) USE 534093P AND 534097	14G. 4H.	1
0850-31	▲ 532508P	SUPPORT. SELECTOR LEVER (WITH POWER STEER) W-Y-F-USE 534093P AND 534098	} NOTE 1	14G. 4H.
0850-31	▲ 532508P	SUPPORT. SELECTOR LEVER (WITH POWER STEER) C-K-USE 534093P AND 534099		14G. 4H.
0850-31	534093P	SUPPORT. SELECTOR LEVER - NOTE 2.	14G. 4H.	1
0850-33	527416	WASHER. SPRING 1 17/32" I.D.	10G. 12G. H. 3H.	1
0850-33	532545	WASHER. SPRING 1 1/2" I.D.	14G. 4H.	1
0850-36	530439	PLATE. SELECTOR DETENT.	10G. 12G. H. 3H.	1
	614-#8-6	SCREW. TO SUPPORT NO. 8X3/8".	10G. 12G. H. 3H.	2
0850-38	470-10	BALL. DETENT 5/16"	10G. 12G. 14G. H. 3H. 4H	1
0850-41	527301	SPRING. DETENT	10G. 12G. H. 3H.	1
0850-41	533323	SPRING. DETENT	14G. 4H.	1
0850-45	530442	SHAFT AND LEVER. SELECTOR TUBULAR	10G. 12G. H. 3H.	1
0850-45	▲ 533282	SHAFT. SELECTOR TUBULAR (LESS POWER STEER) USE 534997 AND 534093P	} NOTE 1	14G. 4H.
0850-45	▲ 533324	SHAFT. SELECTOR TUBULAR (WITH POWER STEER) W-Y-F-USE 534098 AND 534093P		14G. 4H.
0850-45	▲ 533325	SHAFT. SELECTOR TUBULAR (WITH POWER STEER) C-K-USE 534099 AND 534093P	} NOTE 2	14G. 4H.
0850-45	534097	SHAFT. SELECTOR TUBULAR (LESS POWER STEER)		14G. 4H.
0850-45	534098	SHAFT. SELECTOR TUBULAR (WITH POWER STEER) EXCEPT C-K	14G. 4H.	1
0850-45	534099	SHAFT. SELECTOR TUBULAR (WITH POWER STEER) C-K.	14G. 4H.	1
0850-48	532879	LEVER W/GREASE FITTING. SELECTOR SHAFT (LESS POWER STEER) .	14G. 4H.	1
0850-48	533328	LEVER W/GREASE FITTING. SELECTOR SHAFT (WITH POWER STEER) .	14G. 4H.	1
	718-04	GREASE FITTING. ALEMITE STRAIGHT	14G. 4H.	1

- NOTES
- ▲ - NOT AVAILABLE.
 - 1 - 1ST TYPE: IDENTIFIED BY PLAIN LEVER SUPPORT HOLE SOCKET OR BY SHAFT WITH KEY WELDED INTERNALLY - SEE ILLUSTRATION.
 - 2 - 2ND TYPE: IDENTIFIED BY LETTER "A" UNDER LEVER SUPPORT HOLE SOCKET OR BY SHAFT WITH KEY WELDED EXTERNALLY - SEE ILLUSTRATION.

TRANSMISSION - AUTOMATIC

0853

ILLUST. NUMBER	PART NUMBER	CHANGE	DESCRIPTION	MODELS	PER CAR
0850- HAND CONTROL SELECTOR LEVER, SHAFT AND INDICATOR					
Cont'd. (Plates 08-5,6)					
0850-52	530446		BRACKET W/BUSHING, SELECTOR SHAFT UPPER	10G,12G,H,3H.	1
0850-52	533270		BRACKET W/BEARING, SELECTOR SHAFT UPPER (LESS POWER STEER) .	14G,4H.	1
0850-52	534412		BRACKET W/BEARING, SELECTOR SHAFT UPPER - NOTE 3 (WITH POWER STEER)	14G,4H.	1
0850-54	527296		BUSHING, BRACKET	10G,12G,H,3H.	1
	----		SCREW, TO JACKET NO.10X3/8"	10G,12G,H,3H.	3
0850-56	532549		BOLT, ANCHOR, TO JACKET.	14G,4H.	2
0850-57	532550		NUT, SPECIAL 1/4"-28.	14G,4H.	2
1305-10	----		BEARING, STEERING POST (SEE GROUP 1305)		
0850-62	532546		SPRING, SELECTOR SHAFT.	14G,4H.	1
0850-64	532547		RETAINER, SPRING	14G,4H.	1
0850-67	532548		HOUSING, SELECTOR SHAFT SPRING.	14G,4H.	1
0850-69	532556		SPACER, HOUSING.	14G,4H.	1
0850-75	530459X1		DIAL AND HOUSING, SELECTOR INDICATOR.	10G,12G,H,3H.	1
0850-75	532557P		DIAL, SELECTOR INDICATOR.	14G,4H.	1
	159-#6-6W		SCREW, TO BRACKET NO.6-32X3/8"	10G,12G,H,3H.	2
	----		SCREW, TO BRACKET NO.6-32X5/16"	14G,4H.	2
0850-79	533329		HOUSING, SELECTOR INDICATOR LAMP.	14G,4H.	1
	159-#6-7W		SCREW, TO LEVER SUPPORT NO.6-32X7/16"	14G,4H.	2
0850-83	530460		SOCKET AND CABLE, SELECTOR INDICATOR LAMP (INCLUDES POINTER).	10G,12G,H,3H.	1
0850-83	533271		SOCKET AND CABLE, SELECTOR INDICATOR LAMP	14G,4H.	1
	----		SCREW, TO LEVER SUPPORT NO.8-32X3/8"	10G,12G,H,3H.	1
	----		SCREW, TO LEVER SUPPORT NO.8-32X1/4"	14G,4H.	1
	----		WASHER, LOCK NO.8.	10G,12G,H,3H.	2
0850-86	531435		CABLE AND TERMINALS, SELECTOR INDICATOR LAMP.	10G,12G,14G,H,3H,4H	1
0850-90	527793		SHIELD, SELECTOR INDICATOR LAMP BULB.	10G,12G,H,3H.	1
0850-94	188659		BULB, SELECTOR INDICATOR LAMP (MAZDA NO.51)	10G,12G,14G,H,3H,4H	1
0853- HAND CONTROL STARTER CUT-OUT AND BACK-UP LAMP SWITCH					
(Plates 08-5,6)					
0853-1	530440		SWITCH, STARTER CUT-OUT AND BACK-UP LAMP.	10G,12G,H,3H.	1
0853-1	533321		SWITCH, STARTER CUT-OUT AND BACK-UP LAMP (LESS POWER STEER)	14G,4H.	1
0853-1	534390		SWITCH, STARTER CUT-OUT AND BACK-UP LAMP (WITH POWER STEER) NOTE 3.	14G,4H.	1
	----		SCREW, TO JACKET NO.10-32X5/16"	10G,12G,H,3H.	2
	----		SCREW, TO JACKET NO.10-24X1/4"	14G,4H.	2
	----		WASHER, LOCK NO.10.	10G,12G,H,3H.	2
0853-8	530437		ROD, STARTER CUT-OUT AND BACK-UP LAMP SWITCH OPERATING. . .	10G,12G,H,3H.	1
0853-8	533398		ROD, STARTER CUT-OUT AND BACK-UP LAMP SWITCH OPERATING (LESS POWER STEER)	14G,4H.	1
0853-8	534398		ROD, STARTER CUT-OUT AND BACK-UP LAMP SWITCH OPERATING (WITH POWER STEER) NOTE 3.	14G,4H.	1
	----		COTTER 1/16"X3/8".	10G,12G,H,3H.	1
	----		COTTER 1/16" X1/2"	14G,4H.	1

NOTE { 3 - USED ON MODELS 14G 4H
ON AND AFTER CAR SERIAL G-1,235,258 8,313,577

0854

TRANSMISSION - AUTOMATIC

ILLUST. NUMBER	PART NUMBER	CHANGE	DESCRIPTION	MODELS	PER CAR
0854- HAND CONTROL RODS AND BELL CRANK (Plates 08-5,6)					
0854-1	530476		ROD, SHAFT LEVER TO BELL CRANK CONTROL	10G,12G,H,3H.	1
0854-1	532805		ROD, SHAFT LEVER TO BELL CRANK CONTROL EXCEPT C-K	14G,4H.	1
0854-1	532676		ROD, SHAFT LEVER TO BELL CRANK CONTROL C-K		
0854-1	534410		ROD, SHAFT LEVER TO BELL CRANK CONTROL EXCEPT C-K - NOTE 3.	14G,4H.	1
0854-1	534386		ROD, SHAFT LEVER TO BELL CRANK CONTROL C-K - NOTE 3		
0854-5	196333		CLAMP, SPRING.	14G,4H.	1
0854-5	196333		CLAMP, SPRING - EXCEPT C-K (LESS POWER STEER).	10G,12G,H,3H.	1
0854-6	192057		WASHER, SPRING 25/64"	14G,4H.	1
	----		WASHER, PLAIN 3/8"	14G,4H.	1
	----		COTTER 3/32"x1"		
0854-5	196333		CLAMP, SPRING - C-K (WITH POWER STEER)	14G,4H.	1
0854-6	192057		WASHER, SPRING 25/64"	14G,4H.	1
	----		WASHER, PLAIN 3/8"	14G,4H.	1
	----		COTTER, 3/32"x1"		
0854-8	519533		CLEVIS, CONTROL ROD	10G,12G,14G,H,3H,4H	1
	252-06		NUT, LOCK 3/8" -24	10G,12G,14G,H,3H,4H	1
0854-12	192057		WASHER, SPRING 25/64"	10G,12G,14G,H,3H,4H	1
	438-0614		PIN, CLEVIS 3/8"x7/8"	10G,12G,14G,H,3H,4H	1
	----		COTTER 3/32"x1"	10G,12G,14G,H,3H,4H	1
0854-19	530336		BELL CRANK, CONTROL ROD	10G,12G,H,3H.	1
0854-19	532806		BELL CRANK, CONTROL ROD - EXCEPT C-K.	14G,4H.	1
0854-19	532677		BELL CRANK, CONTROL ROD - C-K	14G,4H.	1
	2-0616		BOLT, TO CROSS MEMBER 3/8"-24x1"	10G,12G,14G,H,3H,4H	2
	252-06		NUT, HEX. 3/8"-24	10G,12G,14G,H,3H,4H	2
	380-06		WASHER, LOCK 3/8"	10G,12G,14G,H,3H,4H	2
			LENGTH		
0854-27	530335		ROD, BELL CRANK TO SELECTOR VALVE LEVER CONTROL	10G,12G,H,3H.	1
0854-27	532810		ROD, BELL CRANK TO SELECTOR VALVE LEVER CONTROL (LESS POWER STEER) EXCEPT C-K.	14G,4H.	1
0854-27	532684		ROD, BELL CRANK TO SELECTOR VALVE LEVER CONTROL (LESS POWER STEER) C-K		
0854-27	534575		ROD, BELL CRANK TO SELECTOR VALVE LEVER CONTROL (WITH POWER STEER) EXCEPT C-K.	14G,4H.	1
0854-27	534576		ROD, BELL CRANK TO SELECTOR VALVE LEVER CONTROL (WITH POWER STEER) C-K		
0854-31	184291		WASHER, SPRING 21/64"	10G,12G,14G,H,3H,4H	1
	361-05		WASHER, PLAIN 5/16"	10G,12G,14G,H,3H,4H	1
	----		COTTER 3/32"x1"	10G,12G,14G,H,3H,4H	1
0854-35	192876		BALL JOINT, CONTROL ROD	10G,12G,14G,H,3H,4H	1
	----		WASHER, BALL JOINT SPACING 5/16"	14G,4H.	1
	252-05		NUT, LOCK AND STUD 5/16"-24.	10G,12G,14G,H,3H,4H	2
	380-05		WASHER, LOCK 5/16"	10G,12G,14G,H,3H,4H	1
	----		ROD, ACCELERATOR TRANSMISSION CONTROL (ACCELERATOR CROSS SHAFT TO TRANSMISSION) SEE GROUP 0312.		

NOTE { 3 - USED ON MODELS 14G 4H
ON AND AFTER CAR SERIAL G-1,235,258 8,313,577