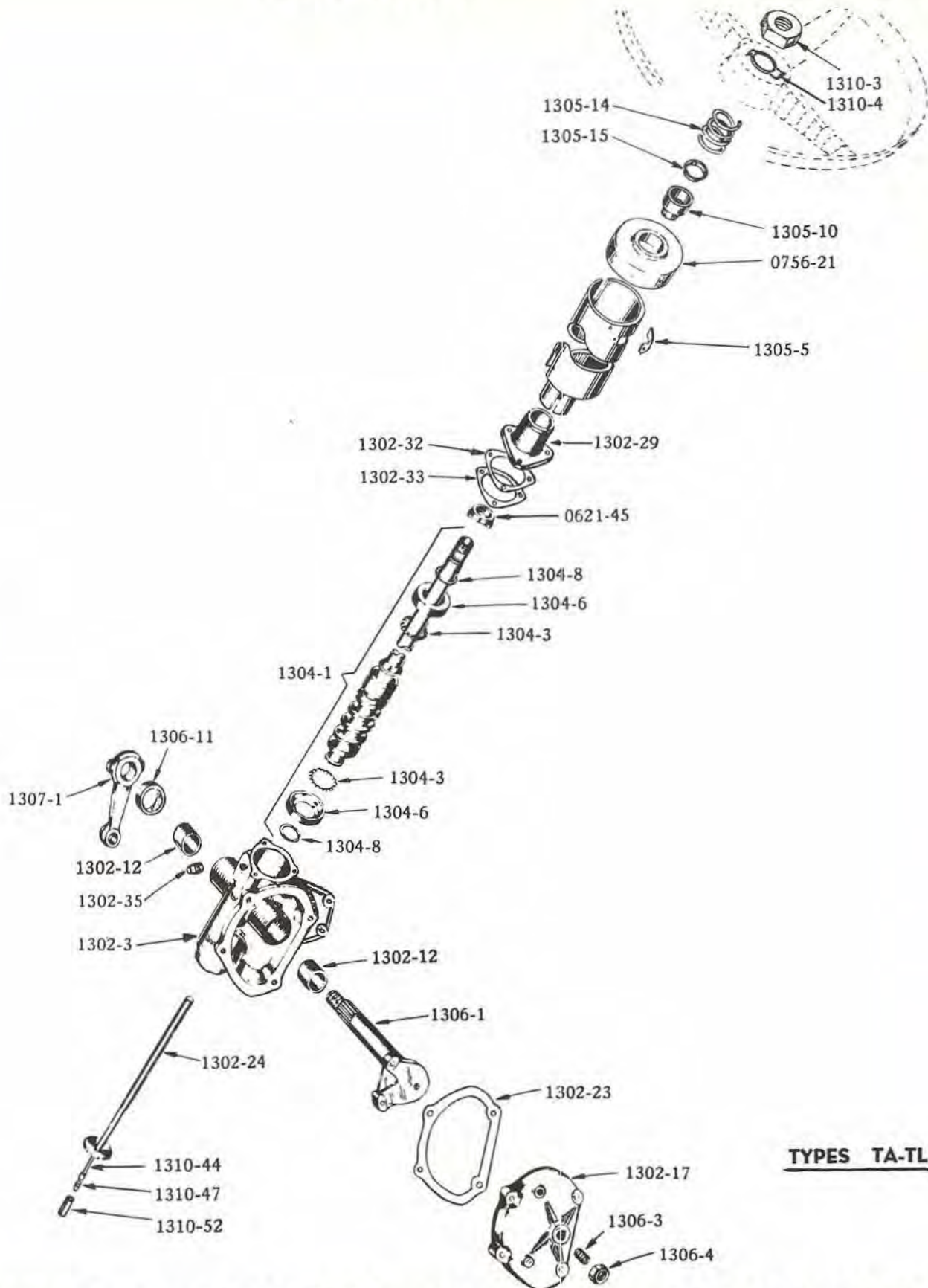


STEERING

Plate 13-1

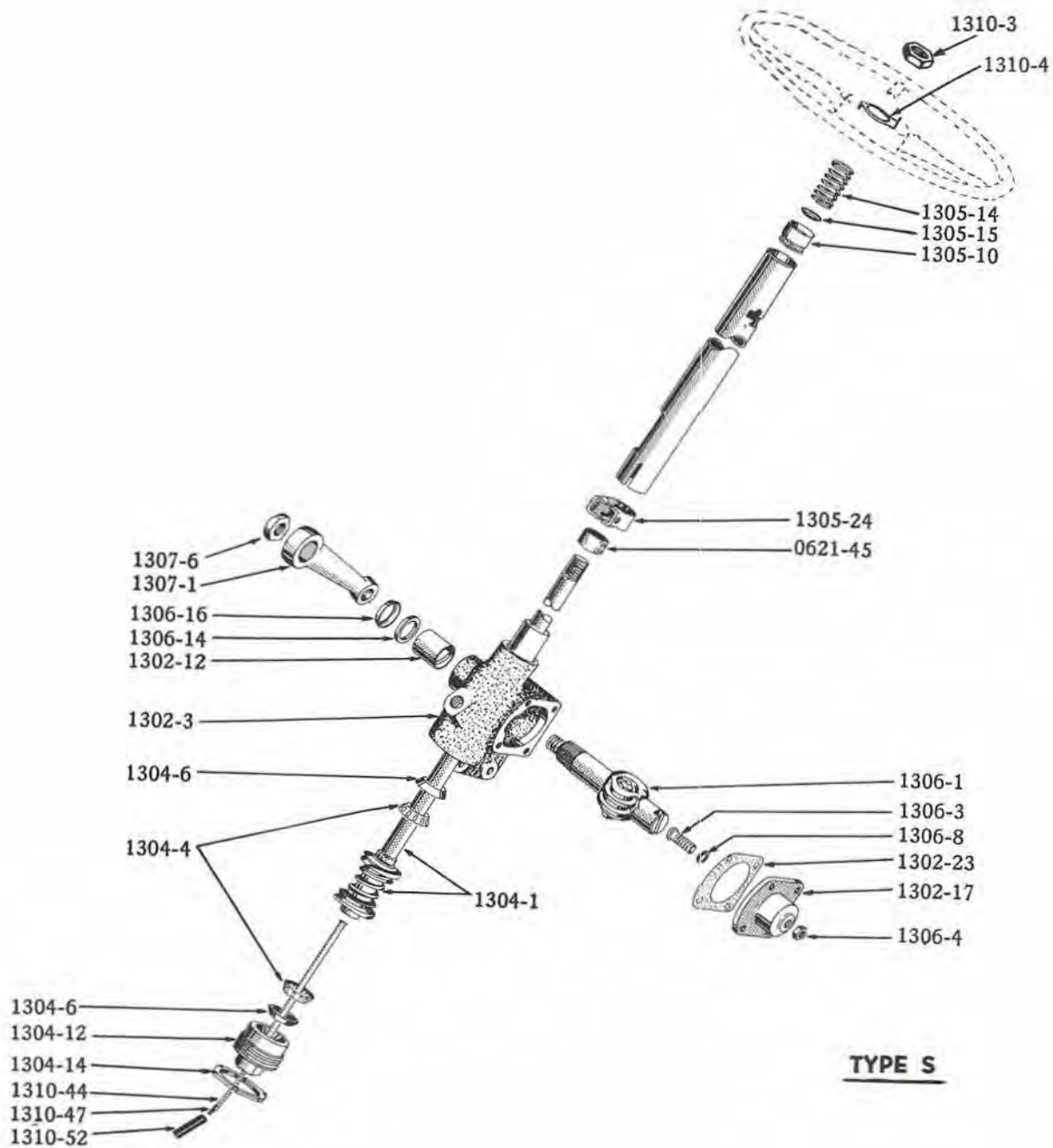


TYPES TA-TL

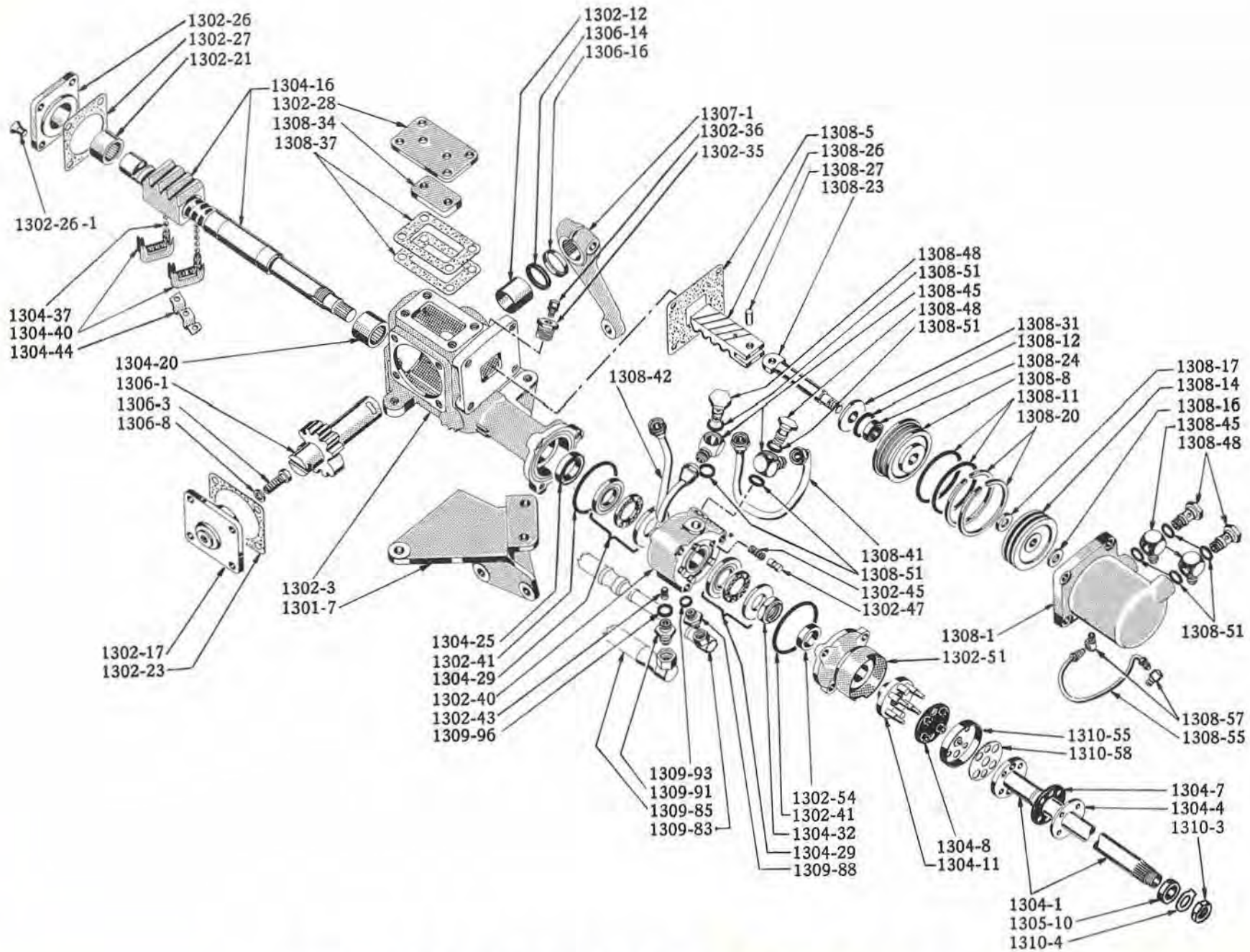
STANDARD STEERING GEAR - Models ★10G, ■12G, 14G, ★H, ■3H, 4H
 ★ Before Car Serials G-1,059,233 and 8,209,065
 ■ After Car Serials G-907,991 and 8,816,662

Plate 13-2

STEERING



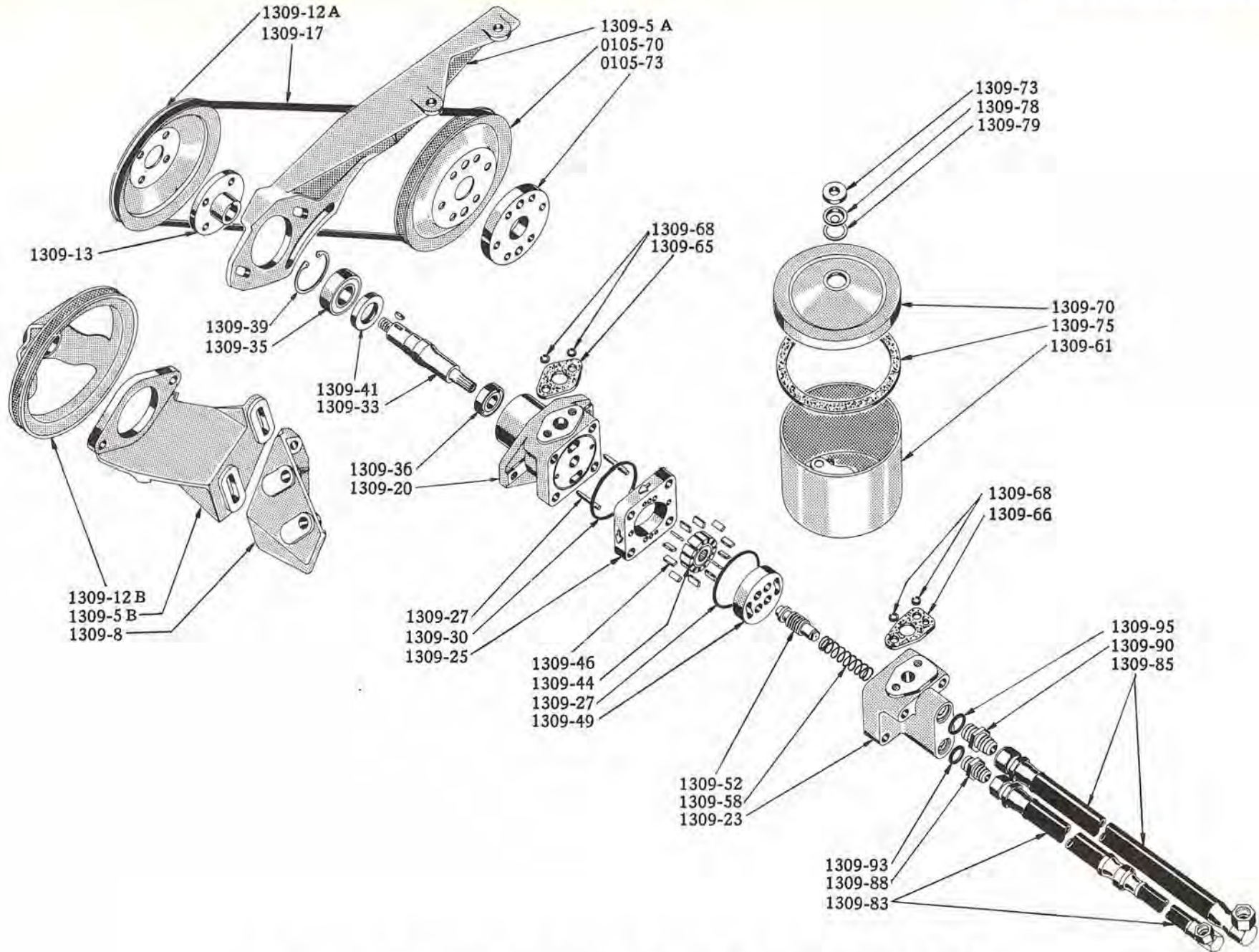
STANDARD STEERING GEAR - Models ★10G, ■12G, 14G, ★H, ■3H, 4H
 ★After Car Serials G-1,059,233 and 8,209,065
 ■ Before Car Serials G-907,991 and 8,816,662



STEERING

Plate 13-3

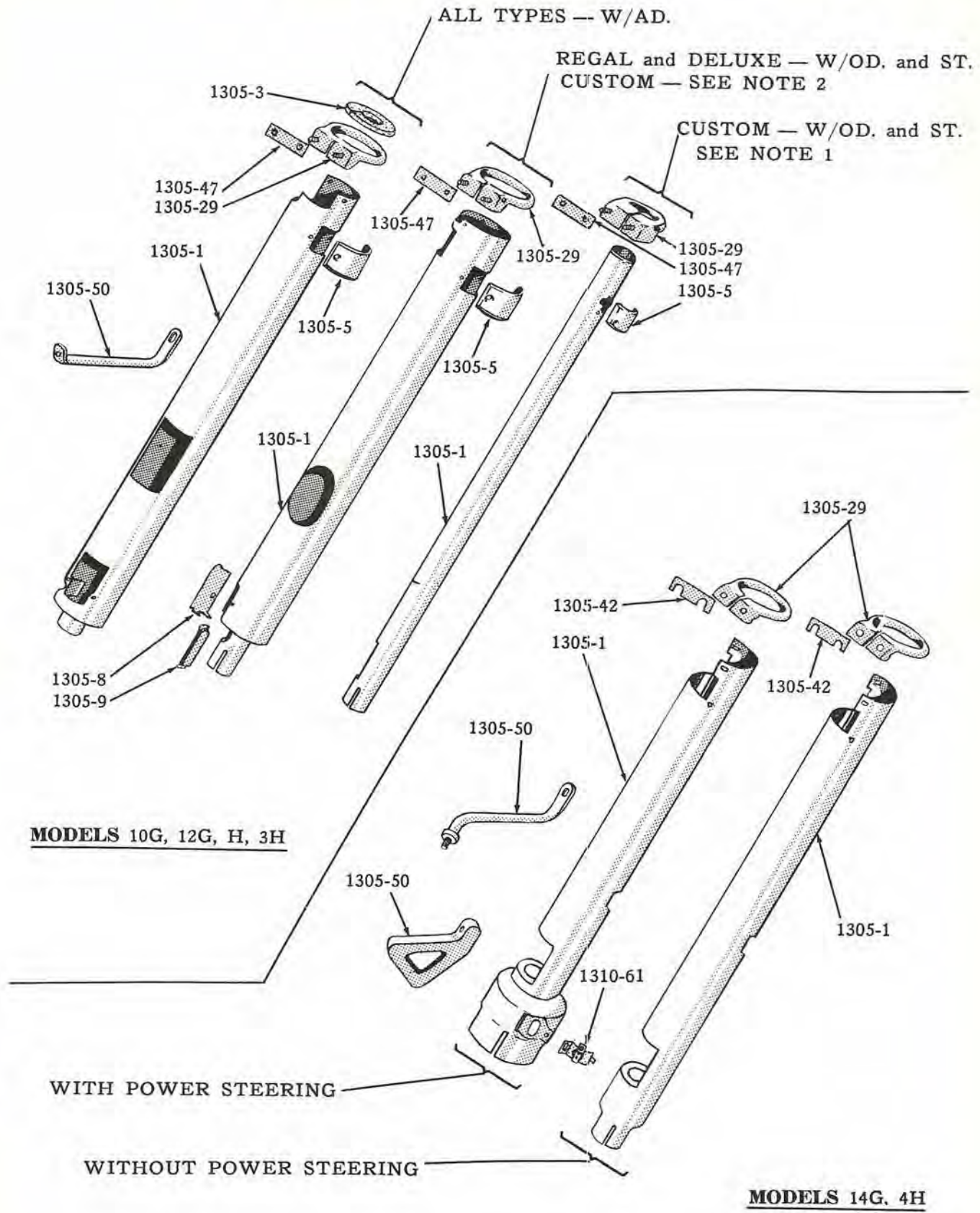
POWER STEERING GEAR - Models 14G-4H



POWER STEERING GEAR PUMP - Models 14G-4H

STEERING

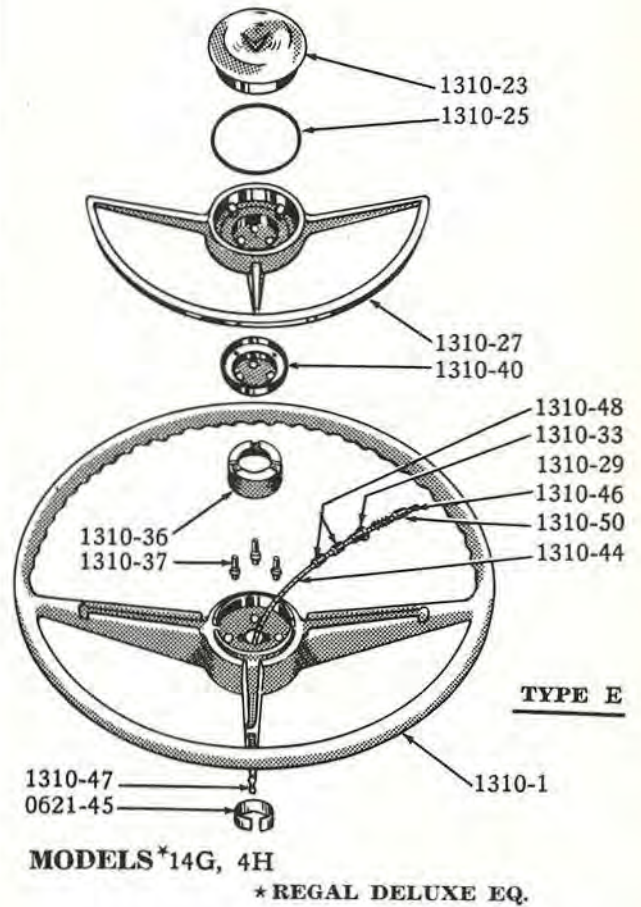
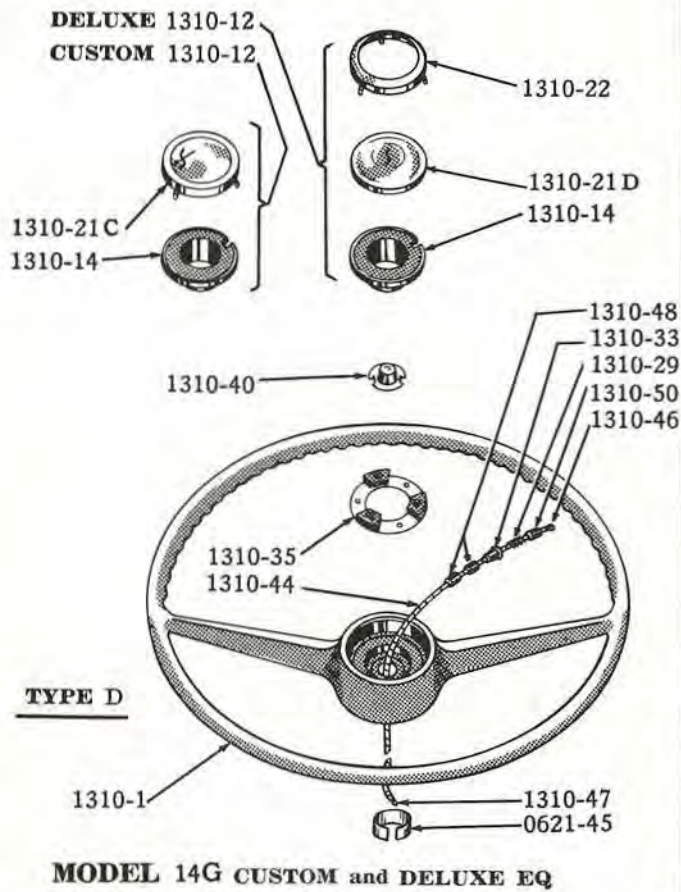
Plate 13-5



STEERING POST JACKETS

STEERING

Plate 13-7



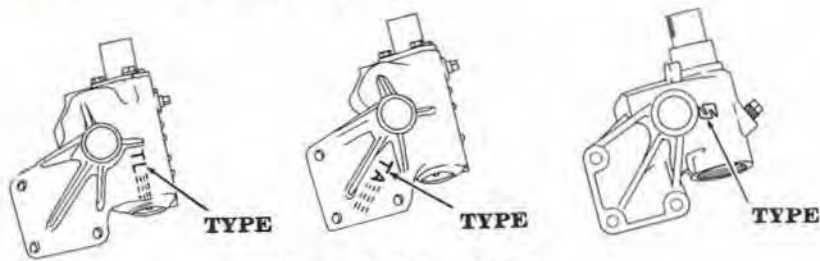
STEERING WHEELS, HORN RINGS, ETC.

1301

STANDARD STEERING

ILLUST. NUMBER	PART NUMBER	CHANGE	DESCRIPTION	MODELS	PER CAR
----------------	-------------	--------	-------------	--------	---------

1301- STEERING GEAR (Plates 13-1,2)



LOCATION OF TYPE SYMBOLS

TYPE TA STEERING GEAR WAS USED ON L.H.C. CARS AS FOLLOWS:
 MODEL 10G BUILT IN CANADA AND LOS ANGELES AND THOSE BUILT IN SOUTH BEND BEFORE CAR SERIAL G-1,059,233.
 MODEL 12G BUILT IN CANADA AND THOSE BUILT IN LOS ANGELES AFTER CAR SERIAL G-907,991.
 MODEL 14G W-F BUILT IN LOS ANGELES.
 ALL MODEL 10G,12G,14G,H,3H AND 4H R.H.C. CARS.
 1,900 CARS FROM CAR SERIAL G-1,015,126 TO G-1,017,090 WERE EQUIPPED WITH TYPE TL STEERING GEARS.

TYPE TL STEERING GEAR WAS USED ON L.H.C. CARS AS FOLLOWS:
 MODEL 10G SOUTH BEND BUILT FROM CAR SERIAL G-1,015,126 TO G-1,017,090.
 MODEL 14G LOS ANGELES BUILT C-K CARS.
 MODEL H SOUTH BEND BUILT BEFORE CAR SERIAL 8,209,065 AND ALL LOS ANGELES AND CANADA BUILT.
 MODEL 3H { SOUTH BEND BUILT AFTER CAR SERIAL 8,221,377
 LOS ANGELES BUILT AFTER CAR SERIAL 8,816,662
 CANADA BUILT AFTER CAR SERIAL 8,954,001
 MODEL 4H BUILT IN SOUTH BEND AND LOS ANGELES.

TYPE S STEERING GEAR WAS USED ON L.H.C. CARS AS FOLLOWS:
 MODELS { 10G SOUTH BEND BUILT AFTER CAR SERIAL G-1,059,233
 12G SOUTH BEND BUILT AFTER CAR SERIAL G-1,115,505
 12G LOS ANGELES BUILT BEFORE CAR SERIAL G-907,001
 14G SOUTH BEND AND CANADA BUILT CARS
 H SOUTH BEND BUILT AFTER CAR SERIAL 8,209,065
 3H SOUTH BEND BUILT BEFORE CAR SERIAL 8,221,377
 3H LOS ANGELES BUILT BEFORE CAR SERIAL 8,816,662
 4H CANADA BUILT CARS

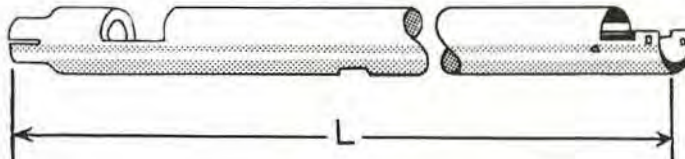
ILLUST. NUMBER	PART NUMBER	CHANGE	DESCRIPTION	MODELS	PER CAR
531589	● STEERING GEAR ASSY. - LHC			10G, 12G, H, 3H	1
531587	● STEERING GEAR ASSY. - LHC			10G	1
531590	● STEERING GEAR ASSY. - LHC			10G, H, 3H	1
531588	● STEERING GEAR ASSY. - RHC			10G, 12G, H, 3H	1
532530	● STEERING GEAR ASSY. - LHC - W-F			14G	1
532277	● STEERING GEAR ASSY. - LHC - C-K			14G	1
532270	● STEERING GEAR ASSY. - LHC - W-F			14G	1
532298	● STEERING GEAR ASSY. - LHC - C-K			14G, 4H	1
532529	● STEERING GEAR ASSY. - LHC - W-F-Y			4H	1
533000	● STEERING GEAR ASSY. - RHC			14G, 4H	1
361-07	SPACER, TO FRAME 1/16" THICK			10G, 12G, 14G, H, 3H, 4H	*
2-0656	BOLT, TO FRAME 3/8"-24X3 1/2"			10G, 12G, 14G, H, 3H, 4H	3
264-06	NUT, HEX. 3/8"-24			10G, 12G, 14G, H, 3H, 4H	3
----	WASHER, PLAIN 3/8"			10G, 12G, 14G, H, 3H, 4H	3

● INCLUDES: HOUSING, POST, CAM LEVER SHAFT, SIDE AND END COVERS BUT ARE LESS JACKET, WHEEL AND ARM.

NOTE { * - USE AS REQUIRED.

1304

STANDARD STEERING

ILLUST. NUMBER	PART NUMBER	CHANGE	DESCRIPTION	MODELS	PER CAR
1304- STEERING GEAR POST AND CAM (Plates 13-1, 2)					
					FOR TYPE GEAR
1304-1	531143		POST AND CAM, STEERING GEAR - LHC	S	10G, 12G, H, 3H. 1
1304-1	● 530909		POST AND CAM, STEERING GEAR - LHC	TA.	10G, 12G, H, 3H. 1
1304-1	● 530910		POST AND CAM, STEERING GEAR - LHC	TL.	10G, H, 3H. 1
	● 530911		POST AND CAM, STEERING GEAR - RHC	TA.	10G, 12G, H, 3H. 1
1304-1	532304		POST AND CAM, STEERING GEAR - LHC - W-F-Y	S	14G, 4H. 1
1304-1	532306		POST AND CAM, STEERING GEAR - LHC - C-K	S	14G, 4H. 1
1304-1	● 532303		POST AND CAM, STEERING GEAR - LHC - W-F	TA.	14G 1
1304-1	● 532307		POST AND CAM, STEERING GEAR - LHC - C-K	TL.	14G, 4H. 1
1304-1	● 532305		POST AND CAM, STEERING GEAR - LHC - W-F-Y	TL.	4H. 1
	● 533839		POST AND CAM, STEERING GEAR - RHC	TA.	14G, 4H. 1
● - INCLUDES: BEARING BALLS, CUPS AND LOCK RINGS					
1304-3	470-10		BALL, POST CAM BEARING 5/16"	TA, TL.	10G, 12G, 14G, H, 3H, 4H 22
1304-4	531142		CONE AND ROLLERS, POST CAM BEARING - LHC.	S	10G, 12G, 14G, H, 3H, 4H 2
1304-6	531141		CUP, POST CAM BEARING - LHC	S	10G, 12G, 14G, H, 3H, 4H 2
1304-6	197101		CUP, POST CAM BEARING	TA, TL.	10G, 12G, 14G, H, 3H, 4H 2
1304-8	197100		LOCK RING, CUP (FOR 197101).		10G, 12G, 14G, H, 3H, 4H 2
1304-12	531120		ADJUSTER W/BEARING CUP, POST CAM BEARING.	S	10G, 12G, 14G, H, 3H, 4H 1
1304-14	531121		NUT, LOCKING - SPECIAL		10G, 12G, 14G, H, 3H, 4H 1
1305- STEERING POST JACKET AND BRACKET (Plate 13-5)					
1305-1	530066		JACKET W/BEARING, POST - LHC - NOTE 1 - WI-FI-CI-Q4	} EXCEPT AD	10G, 12G 1
1305-1	530033		JACKET, POST - LHC - NOTE 2 - WI-FI-CI-Q4		10G, 12G 1
1305-1	530033		JACKET, POST - LHC - EXCEPT WI-FI-CI-Q4.		10G, 12G, H, 3H. 1
	530688		JACKET W/BEARING, POST - RHC.		10G, 12G, H, 3H. 1
1305-1	530444		JACKET, POST - LHC (WITH AD).		10G, 12G, H, 3H. 1
					
				OVERALL LENGTH	
1305-1	532536		JACKET, STEERING - W-F-Y.31 9/32"	14G, 4H. 1
1305-1	532537		JACKET, STEERING - C-K.35 3/16"	14G, 4H. 1
	----		COVER, STEERING POST JACKET - SEE BRACKET, REMOTE CONTROL - GROUP 0756		10G, 12G, H, 3H.
	----		HOUSING, JACKET GEAR SHIFT - SEE GROUPS 0756, 0850.		14G, 4H.
	----		BRACKET, SHAFT UPPER - SEE GROUPS 0756, 0850.		14G, 4H.
1305-3	530445		SEAL, STEERING POST JACKET - FELT (WITH AD)		10G, 12G, H, 3H. 1
1305-5	515548P		COVER, DIRECTIONAL SIGNAL HOLE (FOR 530066 AND 530688 JACKETS)		10G, 12G, H, 3H. 1
1305-5	530062P		COVER, DIRECTIONAL SIGNAL HOLE (FOR 530033 AND 530444 JACKETS)		10G, 12G, H, 3H. 1
	----		SCREW, TO JACKET NO. 10-32x3/8"		10G, 12G, H, 3H. 2
1305-8	530750		PLATE, JACKET LOWER END (FOR 530033) JACKET)		10G, 12G, H, 3H. 1
	620-#8-8		SCREW, TO JACKET NO. 8-15x1/2".		10G, 12G, H, 3H. 2

NOTES	1 - USED ON CUSTOM MODEL	BEFORE CAR SERIAL	SOUTH BEND	10G	.12G	
		AFTER CAR SERIAL	LOS ANGELES	G-1,111,611	----	
	2 - USED ON CUSTOM MODEL	BEFORE CAR SERIAL	LOS ANGELES	----	G-907,991	12G
		AFTER CAR SERIAL	SOUTH BEND	G-1,111,611	----	G-907,991

STANDARD STEERING

1305

ILLUST. NUMBER	PART NUMBER	CHANGE	DESCRIPTION	MODELS	PER CAR
1305- STEERING POST JACKET AND BRACKET-Cont'd.					
(Plate 13-5)					
				FOR TYPE GEAR	
1305-9	530751		COVER, JACKET LOWER END (FOR 530033 JACKET)	10G,12G,H,3H.	1
1305-10	521742		BEARING, JACKET (FOR 530066 AND 530688 JACKETS)	10G,12G,H,3H.	1
1305-10	525662		BEARING, JACKET (FOR 530033 AND 530444 JACKETS)	10G,12G,H,3H.	1
1305-10	532449		BEARING, JACKET	14G,4H.	1
1305-14	196378		SPRING, JACKET BEARING.	10G,12G,H,3H.	1
1305-14	534227		SPRING, JACKET BEARING.	14G,4H.	1
1305-15	192414		SEAT, JACKET BEARING SPRING	10G,12G,14G,H,3H,4H	1
1305-20	530908		OIL SEAL, JACKET LOWER - FELT	TA,TL. 10G,12G,H,3H.	1
1305-24	531122		CLAMP, JACKET	10G,12G,H,3H.	1
1305-24	532885		CLAMP, JACKET	14G,4H.	1
	2-0530		BOLT, CLAMPING 5/16"-24X1 7/8"	10G,12G,14G,H,3H,4H	1
	252-05		NUT, HEX. 5/16"-24.	10G,12G,14G,H,3H,4H	1
	384-05		WASHER, LOCK 5/16".	10G,12G,14G,H,3H,4H	1
1305-29	293640P		BRACKET, STEERING POST-LHC.	TA . 10G,12G	1
1305-29	293642P		BRACKET, STEERING POST-LHC	S . 10G,12G	1
			NOTE 1		
1305-29	293871P		BRACKET, STEERING POST-LHC	S . 10G,12G	1
			NOTE 2		
1305-29	293642P		BRACKET, STEERING POST-LHC	TA . 10G,12G	1
			NOTE 3		
1305-29	293632P		BRACKET, STEERING POST-LHC	TA . 10G,12G	1
1305-29	293630P		BRACKET, STEERING POST-LHC	TA . 10G,12G	1
			NOTE 3		
1305-29	293871P		BRACKET, STEERING POST-LHC	TA . 10G,12G	1
1305-29	293883P		BRACKET, STEERING POST-LHC	S . 10G,12G	1
			NOTE 3		
1305-29	293632P		BRACKET, STEERING POST-LHC	TA . 10G,12G	1
1305-29	293630P		BRACKET, STEERING POST-LHC	TA . 10G,12G	1
			NOTE 3		
1305-29	293871P		BRACKET, STEERING POST-LHC	TA . 10G,12G	1
1305-29	293883P		BRACKET, STEERING POST-LHC	TL,S. 10G,12G	1
			NOTE 3		
			EXCEPT AD.		
			EXCEPT W1-F1-C1-Q4		
			WITH OD.		
			WITH AD.		
203-0520			STUD, TO INST. BOARD 5/16"-18-24X1 1/4" (FOR 293883)	10G,12G	2
251-05			NUT, WELD BOLT HEX. 5/16"-18	10G,12G	2
252-05			NUT, STUD HEX. 5/16"-24	10G,12G	2
361-05			WASHER, PLAIN 5/16"	10G,12G	2
380-05			WASHER, LOCK 5/16".	10G,12G	2
----			BOLT, CLAMPING 5/16"-18X2 5/8" (FOR 293883).	10G,12G	1
1-0552			BOLT, CLAMPING 5/16"-18X3 1/4" (FOR 293630,32 AND 293871).	10G,12G	1
----			BOLT, CLAMPING 5/16"-18X3 1/2" (FOR 293640, 293642).	10G,12G	1
----			NUT, CROWN 5/16"-18	10G,12G	1
293903P			BRACKET, STEERING POST - RHC (CONSISTS OF: UPPER AND LOWER HALVES).	10G,12G	1
----			SCREW, TO UPPER BRACKET 5/16"-18X1".	10G,12G	2
1-0524			BOLT, TO INST. BOARD 5/16"-18X1 1/2".	10G,12G	2
251-05			NUT, HEX. 5/16"-18	10G,12G	2
361-05			WASHER, PLAIN 5/16"	10G,12G	2
380-05			WASHER, LOCK 5/16".	10G,12G	2

NOTES

1 - USED ON CUSTOM MODEL	BEFORE CAR SERIAL	SOUTH BEND	10G	12G
	AFTER CAR SERIAL	LOS ANGELES	G-1,111,611	---
				G-907,991
2 - USED ON CUSTOM MODEL	BEFORE CAR SERIAL	LOS ANGELES	10G	12G
	AFTER CAR SERIAL	SOUTH BEND	G-1,111,611	---
				G-907,991
3 - USE WHEN HIGHER POSITION OF STEERING WHEEL IS REQUIRED.				

1305

STANDARD STEERING

ILLUST. NUMBER	PART NUMBER	CHANGE	DESCRIPTION	MODELS	PER CAR
1305- STEERING POST JACKET AND BRACKET-Cont'd.					
(Plate 13-5)					
1305-29	293871P		BRACKET, STEERING POST - LHC.	H.3H.	1
1305-29	293883P		BRACKET, STEERING POST - LHC - NOTE 3	H.3H.	1
	203-0520		STUD. TO INST. BOARD 5/16" -18-24X1 1/4" (FOR 293883)	H.3H.	2
	251-05		NUT, WELD BOLT 5/16" -18	H.3H.	2
	252-05		NUT, STUD HEX. 5/16"-24	H.3H.	2
	361-05		WASHER, PLAIN 5/16"	H.3H.	2
	----		WASHER, LOCK 5/16"	H.3H.	2
	1-0552		BOLT, CLAMPING 5/16" -18X3 1/4" (FOR 293871)	H.3H.	1
	----		BOLT, CLAMPING 5/16" -18X2 5/8" (FOR 293883)	H.3H.	1
	----		NUT, CROWN 5/16"-18	H.3H.	1
	293910P		BRACKET, STEERING POST - RHC (CONSISTS OF: UPPER AND LOWER HALVES)	H.3H.	1
	----		SCREW, TO UPPER BRACKET 5/16" -18X1"	H.3H.	2
	251-05		NUT, WELD BOLT HEX. 5/16"-18	H.3H.	2
	361-05		WASHER, PLAIN 5/16"	H.3H.	2
	380-05		WASHER, LOCK 5/16"	H.3H.	2
1305-29	532994P		BRACKET, STEERING POST.	14G.4H.	1
1305-42	533342		SPACER, TO INST. BOARD 1/8" THICK.	14G.4H.	*
	2-0524		BOLT, TO INST. BOARD 5/16"-24X1 1/2"	14G.4H.	2
	252-05		NUT, HEX. 5/16" -24	14G.4H.	2
	384-05		WASHER, SH. PRF. 5/16"	14G.4H.	2
	1-0552		BOLT, CLAMPING 5/16" -18X3 1/4"	14G.4H.	1
	----		NUT, CROWN 5/16" -18.	14G.4H.	1
1305-47	293635		ANTI-SQUEAK, BRACKET TO INST. BOARD - LHC	10G.12G.H.3H.	1
	291574		ANTI-SQUEAK, BRACKET TO INST. BOARD - RHC	10G.12G.	1
	293913		ANTI-SQUEAK, BRACKET TO INST. BOARD - RHC	H.3H.	1
	----		ANTI-SQUEAK, BRACKET TO JACKET (FOR 293883 BRACKET)	10G.12G.H.3H.	1
1305-50	294080P		BRACE, BRACKET TO COWL - LHC.	10G.12G.H.3H.	1
	291083P		BRACE, BRACKET TO COWL - RHC.	10G.12G.	1
	291085P		BRACE, BRACKET TO COWL - RHC.	H.3H.	1
	1-0416		BOLT, TO COWL 1/4" -20X1"	10G.12G.H.3H.	1
	1-0416		BOLT, TO BRACKET 1/4"-20X1"	10G.12G.H.3H.	1
	251-04		NUT, HEX. 1/4" -20.	10G.12G.H.3H.	2
	----		WASHER, PLAIN 1/4"	10G.12G.H.3H.	2
	----		WASHER, LOCK 1/4"	10G.12G.H.3H.	2
1305-50A	298135		BRACE, BRACKET TO COWL - W-F-Y.	14G.4H.	1
	▲ 299708		BRACE, BRACKET TO COWL - C-K-NOTE 4 (USE 1 EA. 304725P, 304726P)	14G.4H.	1
1305-50B	304725P		BRACE, BRACKET TO COWL - C-K-NOTE 5	14G.4H.	1
	----		BOLT, FASTENING 5/16"-18X3/4" } FOR 299708	14G.4H.	2
	1578X23		SPEED NUT, 5/16"	14G.4H.	2
	251-05		NUT, FASTENING 5/16"-18 (FOR 298135)	14G.4H.	1
	----		WASHER, SH-PRF. 5/16"	14G.4H.	1
	304726P		BRACKET, BRACKET TO COWL BRACE - C-K-NOTE 6	14G.4H.	1
	294077		BRACKET, COWL BRACE - LHC	10G.12G.H.3H.	1

- NOTES
- * - USE AS REQUIRED.
 - ▲ - NOT AVAILABLE.
 - 3 - USE WHEN HIGHER POSITION OF STEERING WHEEL IS REQUIRED.
 - 4 - USED ON MODELS

14G	4H
BEFORE BODY NUMBERS C3-1,327 C5-3,415 C3-914 C5-2,901	
K5-1,619 K5-1,605	
 - 5 - USED ON AND AFTER BODY NUMBERS IN NOTE 4.
 - 6 - FOR USE WITH 304725P WHEN USED ON CARS BEFORE BODY NUMBERS IN NOTE 4.

1310

STANDARD STEERING

ILLUST. NUMBER	PART NUMBER	CHANGE	DESCRIPTION	FOR TYPE WHEEL	MODELS	PRI CAR
1310- STEERING WHEEL, HORN PUSH BUTTON, RING, CABLE, ETC.						
Cont'd. (Plates 13-6,7)						
1310-12	526759X1		BUTTON W/EMBLEM, HORN PUSH - W1-F1-C1-Q4.	A	10G	1
1310-12	526759X2		BUTTON W/EMBLEM, HORN PUSH - W1-F1-C1-Q4.	A	12G	1
1310-12	530364		BUTTON W/EMBLEM, HORN PUSH - W3-F3-C3-Q1.	A	10G, 12G	1
1310-12	533191		BUTTON W/EMBLEM, HORN PUSH - W1-F1.	D	14G	1
1310-12	533224		BUTTON W/EMBLEM, HORN PUSH - W3-F3-C3.	D	14G	1
1310-14	520395		BUTTON ONLY, HORN PUSH - EXCEPT W5-F5-C5-Q2-S-K.	A	10G, 12G, 14G	1
1310-21A	526750X1		EMBLEM, HORN PUSH BUTTON - W1-F1-C1-Q4.	A	10G	1
1310-21A	526750X2		EMBLEM, HORN PUSH BUTTON - W1-F1-C1.	A	12G	1
1310-21A	530365		EMBLEM, HORN PUSH BUTTON - W3-F3-C3-Q1.	A	10G, 12G	1
1310-21C	533190		EMBLEM, HORN PUSH BUTTON - W1-F1.	D	14G	1
1310-21D	533219		EMBLEM, HORN PUSH BUTTON - W3-F3-C3.	D	14G	1
1310-22	520158		RETAINER, EMBLEM (FOR 530365, 533219).	A	10G, 12G, 14G	1
1310-23	526359		CAP, HORN PUSH BUTTON - W5-F5-C5-Q2-S.	B	10G	1
1310-23	526359		CAP, HORN PUSH BUTTON.	B	H	1
1310-23	532903		CAP, HORN PUSH BUTTON - W5-F5-C5-K.	E	14G	1
1310-23	532903		CAP, HORN PUSH BUTTON.	E	4H.	1
1310-25	519179		RING, CAP RETAINING - RUBBER.	B	10G, H	1
1310-25	532902		RING, CAP RETAINING - RUBBER.	E	14G, 4H.	1
1310-27	530155		HORN RING W/CONTACT CAP, HORN PUSH BUTTON - W5-F5-C5-Q2-S.	B	10G	1
1310-27	530155		HORN RING W/CONTACT CAP, HORN PUSH BUTTON.	B	H	1
	524083		SCREW, TO WHEEL NO.8-32X1 3/8"		10G, H	3
	361-#8		WASHER, INSULATING.		10G, H	3
			WASHER, PLAIN NO.8.		10G, H.	3
1310-27	531764		HORN RING W/CONTACT CAP, HORN PUSH BUTTON - W5-F5-C5-S-K.	C	12G	1
1310-27	531764		HORN RING W/CONTACT CAP, HORN PUSH BUTTON.	C	3H.	1
1310-27-1	531811		RETAINER, HORN RING.		12G, 3H.	1
	1149-#8-6		SCREW, RETAINER TO WHEEL NO.8-32X3/8"		12G, 3H.	2
	531832		SCREW, RING TO WHEEL NO.10-24X3/4"		12G, 3H.	2
	531767		SPACER, SCREW INSULATING.		12G, 3H.	2
	384-#10		WASHER, SHAKEPROOF NO.10.		12G, 3H.	2
1310-27	532888		HORN RING W/CONTACT CAP, HORN PUSH BUTTON - W5-F5-C5-K.	E	14G	1
1310-27	532888		HORN RING W/CONTACT CAP, HORN PUSH BUTTON.	E	4H.	1
	524083		SCREW, TO WHEEL NO.8-32X1 3/8"		14G, 4H.	3
	361-#8		WASHER, INSULATING.		14G, 4H.	3
			WASHER, PLAIN NO.8.		14G, 4H.	3
1310-27-2	531836		EMBLEM, HORN RING - W5-F5-C5-S-K.	C	12G	1
1310-27-2	531836		EMBLEM, HORN RING.	C	3H.	1
1310-27-3	531837		PAD, HORN RING EMBLEM.	C	12G, 3H.	1
1310-28	523687		GASKET, HORN PUSH BUTTON EMBLEM - W1-F1-C1-Q4.	A	10G, 12G	1
1310-29	194570		SPRING, PUSH BUTTON (6 COILS)		10G, H	1
1310-29	532201		SPRING, PUSH BUTTON.		12G, 14G, 3H, 4H	1
1310-33	196673		CUP, PUSH BUTTON SPRING.		10G, 12G, 14G, H, 3H, 4H	1
1310-35	192247		PLATE, PUSH BUTTON CONTACT - EXCEPT W5-F5-C5-Q2-S-K.	A-D	10G, 12G, 14G	1
	662-#10-10		SCREW, TO WHEEL NO.10X5/8"		10G, 12G, 14G	3
1310-36	520411		PAD, PUSH BUTTON SHOCK - SPONGE RUBBER - W5-F5-C5-Q2-S-K.	B, C, E.	10G, 12G, 14G	1
1310-36	520411		PAD, PUSH BUTTON SHOCK - SPONGE RUBBER.	B, C, E.	H, 3H, 4H	1
1310-37	519180		SPACER, PUSH BUTTON PAD - FIBRE - W5-F5-C5-Q2-S-K.	B, E	10G, 14G	3
1310-37	519180		SPACER, PUSH BUTTON PAD - FIBRE.	B, E	H, 4H.	3

STANDARD STEERING

1312

ILLUST. NUMBER	PART NUMBER	CHANGE	DESCRIPTION	MODELS	PER CAR
1310- STEERING WHEEL, HORN PUSH BUTTON, RING, CABLE, ETC.					
Cont'd. (Plates 13-6,7)					
FOR TYPE WHEEL					
1310-40	192245		CAP. PUSH BUTTON CONTACT - EXCEPT W5-F5-C5-Q2-S-K . . . A,D .	10G,12G,14G	1
1310-40	522202		CAP. PUSH BUTTON CONTACT - W5-F5-C5-Q2-S-K B,E .	10G,14G	1
1310-40	531838		CAP. PUSH BUTTON CONTACT - W5-F5-C5-S-K C .	12G	1
1310-40	522202		CAP. PUSH BUTTON CONTACT B,E .	H,4H	1
1310-40	531838		CAP. PUSH BUTTON CONTACT C .	3H	1
	618-#6-8		SCREW, TO RING NO.6-32X1/2"	10G,H	3
	522773		SPACER, INSULATING	10G,H	3
	522203		WASHER, LARGE INSULATING	10G,H	3
	522774		WASHER, SMALL INSULATING	10G,H	6
	618-#6-8		SCREW, TO RING NO.6-32X1/2"	12G,14G,3H,4H	3
	531846		WASHER, INSULATING STEP	12G,14G,3H,4H	3
	522774		WASHER, INSULATING STEP	12G,14G,3H,4H	3
			} FOR 522202 CAP		
			} FOR 531838 & 522202 CAP.		
1310-44	520394		CABLE, PUSH BUTTON	10G,H	1
1310-44	532202		CABLE, PUSH BUTTON	12G,3H	1
1310-44	532908		CABLE, PUSH BUTTON	14G,4H	1
1310-46	524757		TERMINAL, UPPER	10G,12G,14G,H,3H,4H	1
1310-47	198667		TERMINAL, LOWER PUSH TYPE	10G,12G,14G,H,3H,4H	1
1310-48	190849		BUSHING, PUSH BUTTON CABLE	10G,12G,14G,H,3H,4H	2
1310-50	194574		FERRULE, PUSH BUTTON CABLE INSULATING - FIBRE	10G,12G,14G,H,3H,4H	1
1310-52	192545		CONNECTOR, PUSH BUTTON CABLE	10G,12G,14G,H,3H,4H	1
1312- STEERING REACH ROD OR DRAG LINK (Plate 12-3)					
LENGTH					
1312-1	530325		ROD W/INTEGRAL ENDS, REACH - LHC - U.S.A.	10G,H	1
1312-1	532063		ROD W/INTEGRAL ENDS, REACH - LHC - U.S.A.	12G,3H	1
1312-1	533059		ROD W/INTEGRAL ENDS, REACH - LHC - W-F-Y	14G,4H	1
1312-1	533060		ROD W/INTEGRAL ENDS, REACH - LHC - C-K. } U.S.A. .16 1/16"	14G,4H	1
1312-1	531207		ROD W/INTEGRAL ENDS, REACH - LHC - CANADA	10G,12G,H,3H	1
1312-1	533061		ROD W/INTEGRAL ENDS, REACH - LHC - W-F-Y } CANADA .16 1/16"	14G,4H	1
1312-1	533062		ROD W/INTEGRAL ENDS, REACH - LHC - C-K. } CANADA .18 1/2"	14G,4H	1
	530517		ROD W/INTEGRAL ENDS, REACH - RHC	10G,12G,H,3H	1
	533387		ROD W/INTEGRAL ENDS, REACH - RHC	14G,4H	1
FOR TYPE GEAR					
1312-5,6	718-04		GREASE FITTING, FRONT & REAR - STRAIGHT - LHCS .	10G,12G,14G,H,3H,4H	2
1312-5	718-04		GREASE FITTING, FRONT - STRAIGHTTA,TL.	10G,12G,14G,H,3H,4H	1
1312-6	734-04		GREASE FITTING, REAR 90°TA,TL.	10G,12G,14G,H,3H,4H	1
	262-08		NUT, BALL STUD HEX, 1/2" -20	10G,12G,14G,H,3H,4H	2
	----		COTTER 3/32" X1"	10G,12G,14G,H,3H,4H	2
1312-16	530202		SEAL, REACH ROD END GREASE	10G,12G,14G,H,3H,4H	2

1301

POWER STEERING (LHC)

ILLUST. NUMBER	PART NUMBER	CHANGE	DESCRIPTION	MODELS	PER CAR
1301- STEERING GEAR (Plate 13-3)					
	534344		STEERING GEAR ASSY. - EXCEPT C-K.	14G.4H.	1
	534345		STEERING GEAR ASSY. - C-K	14G.4H.	1
	1-0720		SCREW, TO MOUNTING BRACKET 7/16"-14X1 1/4".	14G.4H.	3
	361-07		WASHER, PLAIN 7/16"	14G.4H.	3
	380-07		WASHER, LOCK 7/16".	14G.4H.	3
1301-7	534298		BRACKET, STEERING GEAR MOUNTING - EXCEPT C-K.	14G.4H.	1
	534301		BRACKET, STEERING GEAR MOUNTING - C-K	14G.4H.	1
	2-0656		BOLT, TO FRAME 3/8-24X3 1/2".	14G.4H.	2
	2-0650		BOLT, TO FRAME 3/8-24X3 1/8".	14G.4H.	1
	264-06		NUT, HEX. 3/8"-24	14G.4H.	3
	----		WASHER, PLAIN 3/8".	14G.4H.	3
1302- STEERING GEAR HOUSING AND COVERS (Plate 13-3)					
1302-3	534600		HOUSING, STEERING GEAR - (INCL. BUSHING, BEARING AND OIL SEAL).	14G.4H.	1
			FOR FASTENING PARTS - SEE STEERING GEAR ASSEMBLY.		
1302-12	534602		BUSHING, HOUSING.	14G.4H.	1
	----		BEARING, SHAFT AND WORM - SEE GROUP 1304.	14G.4H.	1
	----		OIL SEAL, SHAFT AND WORM - SEE GROUP 1304	14G.4H.	1
1302-17	534606		COVER AND BUSHING, HOUSING SIDE	14G.4H.	1
	1-0612		SCREW, TO HOUSING 3/8" -16X3/4"	14G.4H.	4
	380-06		WASHER, LOCK 3/8"	14G.4H.	4
	----		BUSHING, SIDE COVER - FURNISHED IN 534606 COVER	14G.4H.	1
1302-23	534609		GASKET, SIDE COVER.	14G.4H.	1
1302-26	534610		COVER W/BEARING, HOUSING END.	14G.4H.	1
	1-0612		SCREW, TO HOUSING 3/8" -16X3/4".	14G.4H.	2
1302-26-1	534613		SCREW, TO HOUSING SPECIAL.	14G.4H.	2
	380-06		WASHER, LOCK 3/8"	14G.4H.	2
	----		BEARING, SHAFT AND WORM - SEE GROUP 1304.	14G.4H.	1
1302-27	681328		GASKET, HOUSING END COVER - LHC	14G.4H.	1
1302-28	534645		COVER, HOUSING RACK	14G.4H.	1
	1-0612		SCREW, TO HOUSING 3/8" -16X3/4".	14G.4H.	4
	380-06		WASHER, LOCK 3/8"	14G.4H.	4
1302-35	534618		PLUG, HOUSING GREASE.	14G.4H.	1
1302-36	534605		BREATHER, HOUSING	14G.4H.	1
1302-40	534647		VALVE, HYDRAULIC CONTROL.	14G.4H.	1
1302-41	534650		SEAL, CONTROL VALVE "O" RING.	14G.4H.	2
1302-43	534656		VALVE, CONTROL VALVE PUMP BY PASS	14G.4H.	1
1302-45	534651		SPRING, CONTROL VALVE CENTERING	14G.4H.	5
1302-47	534652		PLUNGER, CONTROL VALVE CENTERING SPRING	14G.4H.	10
1302-51	534653		COVER W/OIL SEAL, CONTROL VALVE TOP	14G.4H.	1
	1-0648		SCREW, THRU VALVE TO HOUSING 3/8" -16X3"	14G.4H.	3
	380-06		WASHER, LOCK 3/8"	14G.4H.	3
1302-54	534655		OIL SEAL, CONTROL VALVE TOP COVER	14G.4H.	1

POWER STEERING (LHC)

1305

ILLUST. NUMBER	PART NUMBER	CHANGE	DESCRIPTION	MODELS	PER CAR
1304- STEERING GEAR POST, SHAFT AND WORM (Plate 13-3)					
1304-1	533262		POST AND FLANGE, STEERING - EXCEPT C-K.	14G.4H.	1
1304-1	533263		POST AND FLANGE, STEERING - C-K	14G.4H.	1
1304-4	533266		PLATE, STEERING POST.	14G.4H.	1
	911882X2		NUT, TO FLANGE BOLT 1/4"-28.	14G.4H.	4
1304-7	533264		INSULATOR, UPPER, STEERING POST	14G.4H.	1
1304-8	533265		INSULATOR, LOWER, STEERING POST	14G.4H.	1
	----		RING, HORN CONTACT - SEE GROUP 1310	14G.4H.	1
1304-11	533251		FLANGE, WORM SHAFT TO STEERING POST (INCL. PINS AND BOLTS).	14G.4H.	1
	441-1214		PIN, TO SHAFT AND WORM 3/8" X7/8	14G.4H.	1
1304-16	534621		SHAFT AND WORM, W/BALL NUT, STEERING GEAR	14G.4H.	1
1304-20	534612		BEARING, UPPER, SHAFT AND WORM.	14G.4H.	1
1304-21	534603		BEARING, LOWER, SHAFT AND WORM.	14G.4H.	1
1304-25	534604		OIL SEAL, SHAFT AND WORM.	14G.4H.	1
1304-29	534608		BEARING, THRUST, SHAFT AND WORM	14G.4H.	2
1304-32	534619		NUT, LOCK, BEARING ADJUSTING	14G.4H.	1
	----		BALL NUT, SHAFT AND WORM - NOT SOLD SEPARATELY.	4G.4H.	1
1304-37	534858		BALL SET, SHAFT AND WORM BALL NUT BEARING (CONSISTS OF: 30 BALLS)	14G.4H.	2
1304-40	534624		GUIDE, BALL NUT BEARING BALL.	14G.4H.	4
1304-44	534625		CLAMP, BEARING BALL GUIDE	14G.4H.	1
	838-045		SCREW, TO BALL NUT 1/4"-28X5/16"	14G.4H.	3
1305- STEERING POST JACKET AND BRACKET (Plate 13-5)					
				OVERALL LENGTH	
1305-1	533267P		JACKET, STEERING POST - W-F-Y	26 57/64"	14G.4H. 1
1305-1	533268P		JACKET, STEERING POST - C-K	30 1/4"	14G.4H. 1
	----		SUPPORT, GEAR SHIFT SHAFT - SEE GROUPS 0756, 0850	14G.4H.	1
	----		BRACKET, GEAR SHIFT SHAFT - SEE GROUPS 0756, 0850	14G.4H.	1
1305-10	534442		BEARING, STEERING POST (LOCATED IN GEAR SHIFT UPPER BRACKET)	14G.4H.	1
1305-14	534512		SPRING, STEERING POST JACKET BEARING.	14G.4H.	1
1305-15	534513		SEAT, STEERING POST BEARING SPRING.	14G.4H.	1
1305-24	533483P		CLAMP, JACKET	14G.4H.	1
	2-0530		BOLT, CLAMPING 5/16" -24X7/8".	14G.4H.	1
	252-05		NUT, HEX. 5/16"-24.	14G.4H.	1
	----		WASHER, LOCK 5/16".	14G.4H.	1
1305-29	532994P		BRACKET, STEERING POST.	14G.4H.	1
1305-42	533342		SPACER, TO INST. BOARD 1/8" THICK.	14G.4H.	*
	2-0524		BOLT, TO INST. BOARD 5/16" -24X1 1/2".	14G.4H.	2
	252-05		NUT, HEX. 5/16"-24.	14G.4H.	2
	----		WASHER, SH-PRF. 5/16"	14G.4H.	2
	1-0552		BOLT, CLAMPING 5/16"-18X3 1/4"	14G.4H.	1
	----		NUT, CROWN 5/16"-18	14G.4H.	1

NOTE { * - USE AS REQUIRED.

1305

POWER STEERING (LHC)

ILLUST. NUMBER	PART NUMBER	CHANGE	DESCRIPTION	MODELS	PER CAR
1305- STEERING POST JACKET AND BRACKET-Cont'd.					
(Plate 13-5)					
1305-50	298135P		BRACE, BRACKET TO COWL - W-F-Y.	14G,4H.	1
1305-50	304725P		BRACE, BRACKET TO COWL - C-K.	14G,4H.	1
	1957X2		BOLT, FASTENING 5/16"-10X3/4".	14G,4H.	2
	1960X4		BOLT, FASTENING 5/16"-18X3/4".	14G,4H.	1
	251-05		NUT, HEX. 5/16"	14G,4H.	1
	1578X27		SPEED NUT 5/16"-10	14G,4H.	1
	361-05		WASHER, PLAIN 5/16"	14G,4H.	1
1306- STEERING GEAR CAM LEVER OR PITMAN SHAFT					
(Plate 13-3)					
1306-1	534615		SHAFT, CAM LEVER.	14G,4H.	1
1306-3	531149		SCREW, ADJUSTING .7/16"-20X1 11/32"	14G,4H.	1
	256-07		NUT, LOCK HEX. 7/16"	14G,4H.	1
			THICK		
1306-8	531150X1		SHIM, SHAFT ADJUSTING SCREW -.063	14G,4H.	*
1306-8	531150X2		SHIM, SHAFT ADJUSTING SCREW -.065	14G,4H.	*
1306-8	531150X3		SHIM, SHAFT ADJUSTING SCREW -.067	14G,4H.	*
1306-8	531150X4		SHIM, SHAFT ADJUSTING SCREW -.069	14G,4H.	*
1306-14	534616		WASHER, SHAFT OIL	14G,4H.	1
1306-16	534617		RETAINER, SHAFT OIL WASHER.	14G,4H.	1
	----		RACK, POWER CYLINDER - SEE GROUP 1308	14G,4H.	1
1307- STEERING GEAR PITMAN ARM (Plate 13-3)					
1307-1	534348		ARM, PITMAN	14G,4H.	1
	2-0844		BOLT, CLAMPING 1/2"-20X2 3/4".	14G,4H.	1
	252-08		NUT, HEX 1/2"-20.	14G,4H.	1
	----		WASHER, LOCK 1/2"	14G,4H.	1
1308- POWER CYLINDER, ADAPTER, PISTON, RACK, PIPES, ETC.					
(Plates 13-3,4)					
1308-1	534626		CYLINDER, POWER	14G,4H.	1
	1-0620		SCREW, TO HOUSING 3/8"-16X1 1/4"	14G,4H.	4
	380-06		WASHER, LOCK 3/8"	14G,4H.	4
1308-5	534628		GASKET, POWER CYLINDER.	14G,4H.	1
1308-8	534629		ADAPTER W/OIL SEAL, POWER CYLINDER.	14G,4H.	1
1308-11	534631		SEAL, OUTER, ADAPTER "O" RING	14G,4H.	2
1308-12	534632		SEAL, INNER, ADAPTER "O" RING	14G,4H.	1
1308-14	534634		PISTON, POWER SYLINDER.	14G,4H.	1
	534664		NUT, TO ROD.	14G,4H.	1
1308-16	534638		WASHER, UPPER	14G,4H.	1
1308-17	534639		WASHER, LOWER	14G,4H.	1
1308-20	534635		RING, POWER CYLINDER PISTON	14G,4H.	2
1308-23	534637		ROD, POWER CYLINDER PISTON TO RACK.	14G,4H.	1
1308-24	534641		OIL SEAL, POWER CYLINDER ROD.	14G,4H.	1
1308-26	534642		RACK, POWER CYLINDER.	14G,4H.	1
1308-27	534643		PIN, TO ROD.	14G,4H.	1
1308-31	534640		PLATE, POWER CYLINDER ROCK STOP	14G,4H.	1

NOTE { * - USE AS REQUIRED.

POWER STEERING (LHC)

1309

ILLUST. NUMBER	PART NUMBER	CHANGE	DESCRIPTION	MODELS	PER CAR
1308- POWER CYLINDER, ADAPTER, PISTON, RACK, PIPES, ETC.					
Cont'd. (Plates 13-3,4)					
1308-34	534644	✓	GUIDE, POWER CYLINDER RACK	14G,4H.	1
	1-0612		SCREW, TO COVER 3/8"-16X3/4"	14G,4H.	2
	380-06		WASHER, LOCK 3/8"	14G,4H.	2
			THICK		
1308-37	534646X1		SHIM, RACK GUIDE.	14G,4H.	*
1308-37	534646X2		SHIM, RACK GUIDE.	14G,4H.	*
1308-37	534646X3		SHIM, RACK GUIDE.	14G,4H.	*
	----		COVER, RACK GUIDE - SEE GROUP 1302.	14G,4H.	1
1308-41	534658		PIPE AND NUTS, VALVE TO LOWER END OF CYLINDER	14G,4H.	1
1308-42	534659		PIPE AND NUTS, VALVE TO HEAD END OF CYLINDER.	14G,4H.	1
1308-45	534660		ELBOW, VALVE TO CYLINDER PIPES UNIVERSAL FITTING.	14G,4H.	4
1308-48	534661		BOLT, FITTING - SPECIAL.	14G,4H.	4
1308-51	534710		SEAL, VALVE TO CYLINDER PIPES ELBOW "O" RING.	14G,4H.	8
	----		UNION, VALVE HOSE - SEE UNION, PUMP TO CONTROL VALVE HOSE - GROUP 1309	14G,4H.	2
1308-55	534663		PIPE AND NUTS, CYLINDER BLEEDER	14G,4H.	1
1308-57	520-03		ELBOW, CYLINDER BLEEDER PIPE, 3/8"X1/8"	14G,4H.	2
1309- STEERING GEAR PUMP, PULLEYS, BELTS ETC.					
(Plate 13-4)					
	534678		PUMP, HYDRAULIC, STEERING GEAR.	14G,4H.	1
	1-0620		SCREW, THRU SUPPORT 3/8"-16X1 1/4"	14G,4H.	2
	----		WASHER, PLAIN 3/8"	14G	2
	380-06		WASHER, LOCK, 3/8"	14G,4H.	2
1309-5A	534267		SUPPORT, PUMP	14G	1
1309-5B	534343		SUPPORT, PUMP	4H.	1
	----		SCREW, TO BLOCK - SEE SCREW, CYLINDER HEAD - GROUP 0102.	14G	2
	1-0620		SCREW, TO BRACKET 3/8"-16X1 1/4"	4H.	2
	----		WASHER, PLAIN 3/8"	4H.	2
	380-06		WASHER, LOCK, 3/8"	4H.	2
1309-8	534342		BRACKET, PUMP SUPPORT	4H.	1
	----		STUD - SEE STUD, CYLINDER HEAD - GROUP 0102.	4H.	2
	252-07		NUT, STUD HEX. 7/16"-20	4H.	2
	380-07		WASHER, LOCK 7/16"	4H.	2
1309-12A	533892		PULLEY, PUMP DRIVE.	14G	1
1309-12B	534296		PULLEY, PUMP DRIVE.	4H.	1
	461-404		KEY, TO SHAFT 1/8"X1/2"	4H.	1
	1-0510		SCREW, TO HUB 5/16"-18X5/8"	14G	4
	380-05		WASHER, LOCK 5/16"	14G	4
	256-08		NUT, TO SHAFT HEX. 1/2"-20	4H.	1
	----		WASHER, PLAIN 1/2"	4H.	1
	----		WASHER, LOCK 1/2"	4H.	1
1309-13	534262		HUB, PUMP DRIVE PULLEY.	14G	1
	461-404		KEY, TO SHAFT 1/8"X1/2"	14G	1
	256-08		NUT, TO SHAFT HEX. 1/2"-20	14G	1
	----		WASHER, PLAIN 1/2"	14G	1
	----		WASHER, LOCK 1/2"	14G	1
1309-17	534266		BELT, PUMP DRIVE.	14G	1
1309-17	534302		BELT, PUMP DRIVE.	4H.	1

NOTE { * - USE AS REQUIRED.

1309

POWER STEERING (LHC)

ILLUST. NUMBER	PART NUMBER	CHANGE ✓	DESCRIPTION	MODELS	PER CAR
1309- STEERING GEAR PUMP, PULLEYS, BELTS ETC.-Cont'd.					
(Plate 13-4)					
1309-20	534679		BODY, PUMP.	14G, 4H.	1
1309-23	534699		COVER, PUMP BODY.	14G, 4H.	1
	1-0636		SCREW, TO BODY 3/8"-16X2 1/4".	14G, 4H.	2
	1-0652		SCREW, TO BODY 3/8"-16X3 1/4".	14G, 4H.	2
1309-25	534685		RING, PUMP.	14G, 4H.	1
1309-27	534686		PIN, RING DOWEL.	14G, 4H.	2
1309-30	534687		SEAL, PUMP RING TO BODY AND COVER "O" RING.	14G, 4H.	2
1309-33	534680		SHAFT, PUMP DRIVE	14G, 4H.	1
1309-35	534682		BEARING, FRONT, PUMP DRIVE SHAFT.	14G, 4H.	1
1309-36	534681		BEARING, REAR, PUMP DRIVE SHAFT	14G, 4H.	1
1309-39	534683		RETAINER, FRONT BEARING.	14G, 4H.	1
1309-41	534684		OIL SEAL, PUMP DRIVE SHAFT.	14G, 4H.	1
1309-44	534688		ROTOR, PUMP	14G, 4H.	1
1309-46	534689		VANE, PUMP ROTOR.	14G, 4H.	12
1309-49	534691		PLATE, PUMP PRESSURE.	14G, 4H.	1
1309-52	534692		VALVE ASSY., PUMP PRESSURE CONTROL.	14G, 4H.	1
1309-58	534694		SPRING, PRESSURE CONTROL VALVE.	14G, 4H.	1
1309-61	534700		RESERVOIR, PUMP	14G, 4H.	1
	534726		SCREW, TO BODY AND COVER	14G, 4H.	4
1309-65	534701		GASKET, TO BODY - CORK.	14G, 4H.	1
1309-66	534702		GASKET, TO COVER - CORK	14G, 4H.	1
1309-68	534703		SPACER, GASKET	14G, 4H.	4
1309-70	534704		COVER, PUMP RESERVOIR	14G, 4H.	1
	1-0660		BOLT, COVER 3/8"-16X3 3/4"	14G, 4H.	1
1309-73	534715		WASHER, PLAIN - SPECIAL	14G, 4H.	1
	380-06		WASHER, LOCK 3/8"	14G, 4H.	1
1309-75	534705		GASKET, PUMP RESERVOIR COVER.	14G, 4H.	1
1309-78	534706		GUIDE, RESERVOIR COVER BOLT	14G, 4H.	1
1309-79	534707		GASKET, RESERVOIR COVER BOLT GUIDE.	14G, 4H.	1
1309-83	534666		HOSE, PUMP TO CONTROL VALVE PRESSURE - W-F-Y.	14G, 4H.	1
1309-83	534667		HOSE, PUMP TO CONTROL VALVE PRESSURE - C-K.	14G, 4H.	1
1309-85	534672		HOSE, PUMP TO CONTROL VALVE RETURN.	14G, 4H.	1
1309-88	534674		UNION, PRESSURE HOSE.	14G, 4H.	2
1309-90	534709		UNION, RETURN HOSE (PUMP END)	14G, 4H.	1
1309-91	534669		UNION, RETURN HOSE (VALVE END).	14G, 4H.	1
1309-93	534675		SEAL, PRESSURE HOSE UNION "O" RING.	14G, 4H.	2
1309-95	534710		SEAL, RETURN HOSE UNION "O" RING (PUMP END)	14G, 4H.	1
1309-96	534670		SEAL, RETURN HOSE UNION "O" RING (VALVE END).	14G, 4H.	1
	534534		CLIP, HOSE TO HOUSING - W-F	14G	1
	534533		CLIP, HOSE TO HOUSING - W-F-Y	4H.	1
	534534		CLIP, HOSE TO HOUSING - C-K	4H.	1

POWER STEERING (LHC)

1310

ILLUST. NUMBER	PART NUMBER	CHANGE	DESCRIPTION	MODELS	PER CAR
1310- STEERING WHEEL, HORN PUSH BUTTON, RING, CABLE ETC.					
Cont'd. (Plates 13-6,7)					
1310-1	532578	■	WHEEL, STEERING - W1-W3-F1-F3	14G	1
1310-1	532480	■	WHEEL, STEERING - W5-F5	14G	1
1310-1	533389	■	WHEEL, STEERING - C3.	14G	1
1310-1	533371	■	WHEEL, STEERING - C5-K.	14G	1
1310-1	532480	■	WHEEL, STEERING - W3-F3	4H.	1
1310-1	532905	■	WHEEL, STEERING - W5-F5-Y	4H.	1
1310-1	533371	■	WHEEL, STEERING - C3.	4H.	1
1310-1	533372	■	WHEEL, STEERING - C5-K.	4H.	1
1310-3	196821		NUT, TO POST HEX. 13/16"-20.	14G,4H.	1
1310-4	534451		LOCK PLATE, NUT	14G,4H.	1
■ - WHEN INSTALLING ON RHC CARS WITH DIRECTIONALS SIGNALS, ROTATE SIGNAL CAM 180°.					
1310-12	533191		BUTTON W/EMBLEM, HORN PUSH - W1-F1.	14G	1
1310-12	533224		BUTTON W/EMBLEM, HORN PUSH - W3-F3-C3	14G	1
1310-14	520395		BUTTON ONLY, HORN PUSH - EXCEPT W5-F5-C5-K.	14G	1
1310-21	533190		EMBLEM, HORN PUSH BUTTON - W1-F1.	14G	1
1310-21	533219		EMBLEM, HORN PUSH BUTTON - W3-F3-C3	14G	1
1310-22	520158		RETAINER, EMBLEM (FOR 533219).	14G	1
1310-23	532903		CAP, HORN PUSH BUTTON - W5-F5-C5-K.	14G	1
1310-23	532903		CAP, HORN PUSH BUTTON	4H.	1
1310-25	532902		RING, CAP RETAINING - RUBBER	14G,4H.	1
1310-27	532888		HORN RING W/CONTACT CAP, HORN PUSH BUTTON - W5-F5-C5-K.	14G	1
1310-27	532888		HORN RING W/CONTACT CAP, HORN PUSH BUTTON	4H.	1
	----		SCREW, TO WHEEL NO.8-32X1 3/8"	14G,4H.	3
	524083		WASHER, INSULATING.	14G,4H.	3
	361-#8		WASHER, PLAIN NO.8.	14G,4H.	3
1310-29	533462		SPRING, PUSH BUTTON	14G,4H.	1
1310-33	533463		CUP, PUSH BUTTON.	14G,4H.	1
1310-35	192247		PLATE, PUSH BUTTON CONTACT - EXCEPT W5-F5-C5-K.	14G	1
	----		SCREW, TO WHEEL NO.10X5/8"	14G	1
1310-36	520411		PAD, PUSH BUTTON SHOCK - RUBBER - W5-F5-C5-K.	14G	1
1310-36	520411		PAD, PUSH BUTTON SHOCK - RUBBER	4H.	1
1310-37	519180		SPACER, PUSH BUTTON PAD - FIBRE - W5-F5-C5-K.	14G	3
1310-37	519180		SPACER, PUSH BUTTON PAD - FIBRE	4H.	3
1310-40	192245		CAP, PUSH BUTTON CONTACT - EXCEPT W5-F5-C5-K.	14G	1
1310-40	522202		CAP, PUSH BUTTON CONTACT - W5-F5-C5-K	14G	1
1310-40	522202		CAP, PUSH BUTTON CONTACT.	4H.	1
	618-#6-8		SCREW, TO RING NO.6-32X1/2" } FOR 522202	14G,4H.	3
	531846		WASHER, INSULATING STEP	14G,4H.	3
	522774		WASHER, INSULATING STEP	14G,4H.	3
1310-44	533467		CABLE, PUSH BUTTON - EXCEPT C-K	14G,4H.	1
1310-44	533468		CABLE, PUSH BUTTON - C-K.	14G,4H.	1
1310-46	524757		TERMINAL, UPPER.	14G,4H.	1
1310-47	533766		TERMINAL, LOWER.	14G,4H.	1
1310-48	190849		BUSHING, PUSH BUTTON CABLE.	14G,4H.	2

1310

POWER STEERING (LHC)

ILLUST. NUMBER	PART NUMBER	CHANGE	DESCRIPTION	MODELS	PER CAR
1310- STEERING WHEEL, HORN PUSH BUTTON, RING, CABLE ETC.					
Cont'd. (Plates 13-6,7)					
1310-50	534135		FERRULE, PUSH BUTTON CABLE INSULATING - FIBRE	14G.4H.	1
1310-55	533465		RING, PUSH BUTTON CABLE CONTACT	14G.4H.	1
1310-58	533327		INSULATOR, CABLE CONTACT RING - RUBBER.	14G.4H.	1
1310-61	533441		BRUSH, CABLE CONTACT RING	14G.4H.	1
	650-#10-4		SCREW, TO JACKET NO. 10X1/4"	14G.4H.	1
	533782X1		CABLE, BRUSH TO CHASSIS CABLES CONNECTOR - EXCEPT C-K . . .	14G.4H.	1
	533782X3		CABLE, BRUSH TO CHASSIS CABLES CONNECTOR - C-K.	14G.4H.	1
1312- STEERING REACH ROD OR DRAG LINK (Plate 12-3)					
				LENGTH	
1312-1	534415		ROD W/INTEGRAL ENDS, REACH - LHC - EXCEPT C-K	14G.4H.	1
1312-1	534416		ROD W/INTEGRAL ENDS, REACH - LHC - C-K.	14G.4H.	1
	718-04		GREASE FITTING, FRONT.	14G.4H.	1
	734-04		GREASE FITTING, REAR	14G.4H.	1
	262-08		NUT, BALL STUD HEX. 1/2"-20.	14G.4H.	2
	----		COTTER 3/32"X1"	14G.4H.	2
	530202		SEAL, REACH ROD END GREASE.	14G.4H.	2